

Chapman Cattle Company

FORAGE-DEVELOPED 2-YEAR OLD BULL SALE

FEBRUARY 24, 2022
STETTLER, AB . 2PM MST



CHAPMAN CATTLE COMPANY FORAGE-DEVELOPED 2 YEAR OLD ANGUS BULL SALE 2022

February 24, 2022 | Stettler Auction Mart, Stettler, Alberta

TERMS AND CONDITIONS

sale professionals

Don Raffan, Auctioneer 250-558-6789
Joe Ferris, Ringman 250-558-8745
Gary Rairdan, Ringman 403-588-0913
Craig Flewelling, Ringman 403-556-0515
Blake Chapman, Buyer Rep 403-741-5760

bids

Buyer may call or send their bids to any of the sale professionals listed above or directly to Chapman Cattle Company. Complete satisfaction is guaranteed for cattle purchased sight unseen as well as all bulls sold.

terms & conditions

All cattle sell under the standard terms and conditions of the Canadian Angus Association. Terms of the sale are cash, payable on Sale Day unless prior arrangements have been made with Chapman Cattle Company.

insurance

Ownership risk to purchaser commences when the Auctioneer's hammer falls. All cattle returning to Chapman Cattle Company must be insured. Although all precautions will be made for the well-being of your cattle until possession has transferred, Chapman Cattle Company will not be liable for any sickness, injury or death that causes loss of use of the specified cattle. A Livestock Insurance agent will be available Sale Day to discuss your coverage options.

announcements

All announcements from the sale block on sale day take precedence over any printed material.

food

Coffee and donuts in the a.m. Lunch will be provided and served starting at 12:00 p.m. Hospitality after the sale.

hotels

Canalta Hotel, Stettler 403-742-3371
Ramada Inn, Stettler 403-742-6555
Super 8 Motel, Stettler 403-742-3391
Heartlander Motel, Stettler 403-742-3401

liability

All persons who attend the sale do so at their own risk and the owners, management, and Sale Day staff assume no liability, and disclaims all liability, legal or otherwise, for any reason.

health

All sale bulls have been vaccinated twice with Vision 8 Somnus and Vista Once; bolstered with Express FP 5-VL5; treated with Ivermectin, Cylence and SafeGuard; supplemented with MultiMin 90 and Vitamin A/D; and fertility tested by Dr. Jackie Dobinson.

storm date

FEB 25, 2022 | 1PM | Stettler Auction Mart
In the event of a weather event, updates will be posted at www.chapmancattle.com or call the Stettler Auction Mart 403-742-2368 or Silas Chapman 403-741-2099.

delivery

Upon Settlement, please choose one of the following options and inform the clerk at the time of settlement. Please leave detailed delivery instructions upon doing so.

A: **\$100 discount** per bull if bulls are picked up sale day.

B: **\$100 discount** per bull if bulls are picked up within a week of the sale.

C. Complimentary Delivery

Every attempt will be made to deliver your new bull(s) as close to your bull pen as possible for bulls selling within the prairie provinces and B.C. Any U.S. purchases will be delivered to Billings, MT. Delivery will

commence in March. Chapman Cattle Company assumes no liability of death or injury for bulls returning to the ranch or in transit on a private or commercial carrier.

sight unseen purchases

Can't make it to the sale? We guarantee you won't be disappointed in a Chapman "Forage-Developed" bull that you buy "sight unseen". In fact, we sell many bulls every year this way. Our experience over the past 70 years is the sooner you contact us, the better we are able to match the right cattle to your specifications. When cattle purchased sight-unseen are delivered, the buyer has the right of refusal for any animal that is not as they were represented. Guarantee applies only to cattle discussed with a Chapman Sale Professional prior to the sale.

guarantee

We're confident that our 'Forage-Developed' bulls will meet and exceed your standards for longevity and performance. If for any reasons you're not satisfied with a bull you purchase from us, you don't have to pay – just call us for a prompt and courteous credit or refund. Any claims are to be made by October 01, 2021.

follow up & consulting

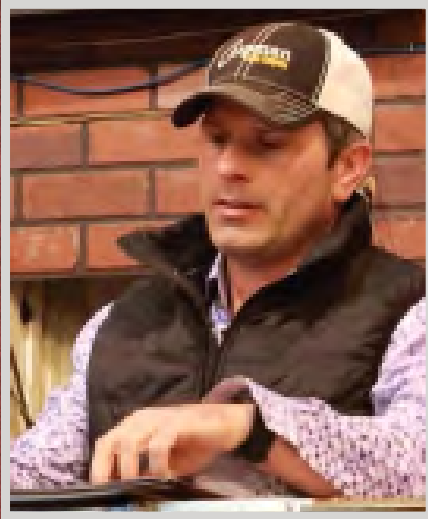
We are interested about your program too, your success, and the effectiveness of our cattle in your herd. Feel free to contact us at any time.

Call us at (403) 741-2099, email us at silas@chapmancattle.com or through our website at www.chapmancattle.com.

Complete Bull Information available online including catalog, video, individual performance, EPD's, sale weights and scrotal measurements at: www.chapmancattle.com.

Please let us know if we can provide you with any additional information or assistance. We look forward to seeing you

Welcome from CHAPMAN CATTLE COMPANY



Welcome to our Annual Forage-Developed Bull Sale; and thank you for your interest in the genetics we bring forward every year. Over the course of three generations and 72 years we have been developing and marketing 2-Year-Old bulls exclusively. Within that time our philosophy to breeding cattle really hasn't changed: avoid any shot-gun approach to genetic selection, avoid chasing fads, and remain steadfast in maternal genetic selection.

As cattle producers, we all have access to the same genetics annually. We have focused on stacking proven genetics that are like-in-type; while allowing the environment to sort through the genetic base we have, or have accessed, in order to determine the replacements we keep and the bulls we sell. This has resulted in a multi-generational product that breed true in both genotype and phenotype.

The phenotype of our cattle has moderated over the past two decades, and this is directly attributed to the cows matching the environmental pressure we place on them. However, the percent body weight weaned per cow is now higher. If we were a commercial cow/calf outfit we would have the ability to run more cows per acre with the option to initiate a terminal crossbreeding system to increase yield. The ideal cow size and weight has been highly debated; but as a whole the smaller cow should contribute more to your gross margin.

Many have asked various questions as to how we get along, so here is a quick overview - right or wrong ...

CALVING

- 1 person is responsible for 500 Range-Calved Purebred cows ... low maintenance cows = low labour costs.
- All calves are weighed and tagged within 24 hours on pasture - no shark cages, quads or body guards - just an aluminum calf catch, a hand held scale with Piggins' string, and a bag of tags.
- 6 hand pulls on 100 heifers in 2021 - more operator impatience than anything!

BREEDING

- Sires are exposed to entire age groups of cows and rotated year to year amongst different age groups. This proves a herd sires worth on all cows within their contemporary group.
- We own and walk all our reference sires - many tangible and intangible benefits to owning the bull.
- We aren't afraid to use bulls that carry our prefix - and not just as a cleanup bull.
- One breeding season - we don't shift late winter calving cows into a spring calving window and call it a 2 year old bull program. 85% of our sale bulls are 1st cycle born, the next 13% was born 1st 2 weeks cycle #2.
- We utilize multi sire pasture breeding. Mother Nature has lined up some good results I never would have.
- Yearling heifers are exposed at 55% mature weight to start calving the same time as the running age cows.

FEEDING

- Like many, we are a cattle operation in an area of high priced grain commodities than influence land valuation and utilization. In short, we are basically feed scavengers, it's cash in cash out for feed inputs; and have placed a lot of selection pressure onto our cattle to "get it done" in a less than desired caloric feed scenario throughout the year.

TWO YEAR OLD BULL SALES

- Weaned late November - no creep.
- Backgrounded on roughage-only until there is grass.
- Summered on the pastures with the best fences (not necessarily the best grass) for 150-180 days.
- Receive a 14% protein pellet at 1% BW for 60 days pre-sale fed once daily.
- Culled right up to sale day for type and temperament.
- Zero tolerance for touching feet. Bulls stand on 1/2" shavings sale day.

We recommend that before you buy a bull anywhere, familiarize yourself with their cowherd, their breeding objectives, and their long-term philosophy. There is no way around it, your cowherd inherits its genes from where the herd sires are sourced from, and that can have a profound financial impact on your program for years.

With that, the sale offering represents a cross section of proven maternal genetics. The bull offering is uniform and consistent - quality sells throughout. We are confident in the genetic package we are selling on Thursday, February 24th and are available 365 days a year to assist you with your purchases. Thank you in advance for your interest and consideration.

Internet Bidding Available

DLMS
www.dlms.ca

For more information call DLMS:
Mark Shologan 780.699.5082 or
DLMS Purebred Team 780.991.3025

INSTRUCTIONS FOR VIEWING & BIDDING ONLINE

Visit www.dlms.ca Fill out the registration form located under registration and sign up for your free user account to select a username and password.

BIDDERS

To be approved as a bidder, log in and click BUYER APPROVAL tab, select the sale you are interested in bidding at and click sign up.

For more information or for help getting approved, call Whitney Bosovich (780.991.3025) or Mark Shologan (780-699-5082).

Silas Chapman

Phone: (403) 741-2099 | silas@chapmancattle.com | www.chapmancattle.com

OUR *Herdsmen*

SIRE

A

BC ROBUST 0807

Tattoo: IMP 0807C DOB: December 26 2015 REG#: 2012143



SPRING '22

BW 1.1
WW 61
YW 88
M 9
CE 6.0
MCE -7.0

BC EAGLE EYE 110-7
BC SURVEYOR 680D
BC 2266 PRIDES LASS 4132 680

BC PURE PRIDE 327-8
BC 327-8 CP BELLE 0-807
BC 607 CP BELLE MF 807

B C LOOKOUT 7024
B C PURE PRIDE ERICA D 110
B C MATRIX 4132
CANE RIDGE PRIDES LASS 2266L

B C LOOKOUT 7024
B C PURE PRIDE 10 825J 327
BC CHARLIE PRIDE 304-6
BC 901 DR BELLE MATRIX MF607

BC Robust 0807 was the high selling bull sourced out of the 2017 Conley Angus Bull Sale. He was the lead off bull in the Champion Yearling Pen of 3 bulls at the 2017 NWSS. He is a very balanced bull: long spined, big hipped and very photogenic in a 5 frame. He is a true breeding bull that has caught the attention of many astute cattlemen. Sons of Robust emulate the same visual appeal of their sire; but more importantly, his daughters now in production are off to a great start and possess the maternal excellence only achieved through decades of genetically predictable breeding.

SIRE

B

SITZ PAYWEIGHT 749E

Tattoo: IMP 749E DOB: January 19 2017 REG#: 2070978



SPRING '22

BW 1.6
WW 48
YW 90
M 31
CE 5.0
MCE 12.0

BASIN PAYWEIGHT 006S
BASIN PAYWEIGHT 1682
21AR O LASS 7017

CONNELLY THUNDER
SITZ FOREVER LADY 612T
SITZ FOREVER LADY 63M

VERMILION PAYWEIGHT J847
BASIN LUCY 3829
HARB PENDLETON 765 J
21AR O LASS F24A

BALDRIDGE KABOOM K243
PARKA OF CONANGA 241
TRAVELER 124 G D A R
LUKENS FOREVER LADY J463

In search of an outcross pedigree that offers a phenotype similar to ours, we chose 749 as one of the higher dollar bulls in the spring '18 Sitz Bull Sale. He posted a BW 87, WW 775, YW 1340, and YSC 40; and is a result of an embryo mating between the highly proven Basin Payweight 1682 and the Pathfinder donor Sitz Forever Lady 612T. She is also the mother behind Sitz Reload 411C. True to the 1682 downline, his progeny are wide-based, deep made cattle with a marketable phenotype. We used 749 and a son heavy in 2021.

SIRE

C

MC CUMBER 307 FORTUNATE 7141

Tattoo: IMP 7141E DOB: January 31 2017 REG#: 2070977



SPRING '22

BW	12
WW	50
YW	95
M	21
CE	8.0
MCE	5.0

SINCLAIR FORTUNATE SON DMF
MC CUMBER FORTUNATE 307
 MISS WIX 9122 OF MC CUMBER

O C C TREMENDOUS 619T
B PRIDE 2143 OF MC CUMBER
 B PRIDE 0135 OF MC CUMBER

SINCLAIR EMULATE 7XT28
 SINCLAIR BLACKBIRD 2P8 7079
 SINCLAIR EXTRA 4X13
 MISS WIX 7126 OF MC CUMBER

O C C EMBLAZON 854E
 O C C DIXIE ERICA 960H
 MC CUMBER 4X13 EXTRA 829
 B PRIDE 626 OF MC CUMBER

7141 was our pick and the 3rd high selling bull out of the 2018 McCumber Angus Bull Sale. Statistically he is balanced with a BW 82, 205 754, WR 104, YW 1466, YR 111, YSC 38. More importantly, everything about 7141 indicates a cow maker. He is triple bred Sinclair Extra 4X13 and out of an outstanding OCC Tremendous 619T dam. He is a long-spined bull, highly fertile, and is structurally hard to fault. His 1st daughters came into production this year and are perhaps some of our best in type.

SIRE

D

MC CUMBER TITANIUM 5197

Tattoo: IMP 5197C DOB: February 09 2015 REG#: 1952923



SPRING '22

BW	25
WW	39
YW	76
M	23
CE	4.0
MCE	3.0

SINCLAIR FORTUNATE SON
MC CUMBER TITANIUM 3127
 MSS WIX 926 OF MC CUMBER

SITZ RAINMAKER 6536
MISS WIX 062 OF MC CUMBER
 MISS WIX 6145 OF MC CUMBER

SINCLAIR EMULATE 7XT28
 SINCLAIR BLACKBIRD 2P8 7079
 O C C MISSING LINK 830M
 MISS WIX 7011 OF MC CUMBER

SITZ RAINMAKER 6169
 SITZ ELSIEMERE 331
 SINCLAIR EXTRA 4X13
 MISS WIX 7111 OF MCCUMBER

5197 isn't a big frame bull, but his width of base, natural thickness and overall mass is evident. He earned an actual weaning weight of 815 lbs; and gained over 4 lbs/day to earn a 365-day weight of 1431 lbs while scanning a REA of 16.0sq. in. His dam is a Pathfinder and stems from multiple generations of proven Miss Wix females. 5197 combines a lot of economically relevant traits required in a low input environment and sons emulate traditional Angus character.

OUR *Herdsmen*

SIRE

E

COLEMAN FORTE 752

Tattoo: IMP 752E DOB: January 09 2017 REG#: 2070976



PAPA FORTE 1921

SPRING '22

BW -0.5
 WW 40
 YW 74
 M 26
 CE 12.0
 MCE 8.0

PAPA OPTIMA 9818
PAPA FORTE 1921
 PAPA ENVIOUS BLACKBIRD 8832
 CONNEALY ONWARD
COLEMAN DONNA 714
 COLEMAN DONNA 386

SCOTCH CAP
 BLACKCAP D H D 2816
 PAPA RITO T POWER D H D 6838
 ENVIOUS BLACKBIRD OF RR 7066
 CONNEALY LEAD ON
 ALTUNE OF CONANGA 6104
 BASIN RAINMAKER 654X
 KMK DONNA J311

752 has a unique and proven maternal lineage, being sired by Papa Forte known for several profit-oriented traits such as calving ease and calf vigor: as well as moderate framed, easy fleshing females with good fertility. Add in the legacy of the Donna 714 donor and 752 has a pedigree by design for moderate, functional and fertile Angus females. 752 bred 65 cows as a 2-year-old and looked great doing it. Unfortunately, he broke a leg and died from a speeding bullet the day before he was to go to stud, but he really stamped this, his last set of sons to sell.

SIRE

F

MC CUMBER STEADFAST 809

Tattoo: IMP 0809F DOB: January 15 2018 REG#: 2187699



SPRING '22

BW 1.3
 WW 53
 YW 97
 M 21
 CE 7.0
 MCE 8.0

MC CUMBER TITANIUM 3127
MC CUMBER STEADFAST 635
 MISS WIX 2003 OF MC CUMBER
 S A V 8180 TRAVELER 004
LASSIE 706 OF MC CUMBER
 LASSIE 0006 OF MC CUMBER

SINCLAIR FORTUNATE SON
 MSS WIX 926 OF MC CUMBER
 O C C TREMENDOUS 619T
 MISS WIX 2022 HC MC CUMBER
 SITZ TRAVELER 8180
 BOYD FOREVER LADY 8003
 A A R NEW TREND 03
 LASSIE 462 OF MC CUMBER

809 was our pick from the 2019 McCumber Sale. He is a balanced bull, clean fronted and long made and he really stamps those qualities into his progeny. A calving ease option with some go, 809 posted BW 84, 205 798, WR 110, YW 1448, YR 112, YSC 38 with an actual REA of 17.60 to ratio 131; along with an IMF of 3.15/107. The story on his dam reads well too, having never missed an A. I. service on 11 calves, posting a NR of 103. We have used 809 on cows and heifers.

SIRE

G

CHAPMAN KING TEN 4522B

Tattoo: SWC 4522B DOB: April 10 2014 REG#: 1830953



CROWFOOT EQUATION

SPRING '22

BW	3.2
WW	64
YW	105
M	20
CE	-2.0
MCE	0.0

CROWFOOT EQUATION 5793R
CROWFOOT 9052W
 CROWFOOT KELTON 4790P

J R SHARPSHOOTER
C H BLACKBIRD 9717
 C H BLACKBIRD 6604

O C C LEGACY 839L
 CROWFOOT FORKS 755K
 O C C HONESTY 962H
 Z O E KELTON 9978

HIGH VALLEY 4C6 AMBUSH
 JOLLY R ENVIOUS 144E
 CONCAR CORNHUSKER 0019
 C H BLACKBIRD 8006

We retained five bulls out of the 2014 calf crop. Those five were all out of what we considered paternally prepotent dams that were proven and donor worthy. 4522B was used on cows and heifers; and stems from a grand old cow that originated from the Cedar Hills herd in Montana. She earned a NR 14/102. "4522" sons emulate his length of spine, proper scrotal shape, and good feet with adequate muscling and a bit more frame. The daughters will make 16-year-old cows too, just like the grandmother.

SIRE

H

CHAPMAN EQUATION 4547B

Tattoo: SWC 4547B DOB: April 18 2014 REG#: 1830809



OCC MOONSHINE 740M

SPRING '22

BW	1.0
WW	50
YW	86
M	30
CE	6.0
MCE	2.0

O C C LEGACY 839L
CROWFOOT EQUATION 5793R
 CROWFOOT FORKS 755K

O C C MOONSHINE 740M
CROWFOOT REV ROSE 5900R
 CROWFOOT CH REV ROSE 1627L

O C C ECHELON 857E
 O C C DIXIE ERICA 960E
 TOMWALL PIED PIPER 413
 GLADWALL B REV ERICA 7289

O C C JUST RIGHT 619J
 O C C DIXIE ERICA 816B
 C&D 455 ROCKETT
 C H REV ROSE 9297

We retained five bulls out of the 2014 calf crop. Those five were all out of what we considered paternally prepotent dams that were proven and donor worthy. 4547B was one of those five and out of the 5900R donor who earned a NR 12/103 who also produced the Memento 0511X herd sire. Interesting that 4547 is a naturally sired son of Crowfoot Equation 5793R who ran here with 50 cows as a 9-year-old bull. The first Crowfoot Equation daughters are now entering their 15th year and easily make an argument to going back to using the old bull, or his downline.

OUR *Herd*sires

SIRE

I

CHAPMAN COALITION 4557B

Tattoo: SWC 4557B DOB: April 17 2014 REG#: 1892847



SITZ ALLIANCE 6595

SPRING '22

BW 2.2
WW 41
YW 66
M 27
CE 4.0
MCE 8.0

SITZ TRAVELER 8180
SITZ ALLIANCE 6595
SITZ BARBARAMERE JET 2698

O C C JOKER 620J
CROWFOOT LADY ERICA 3785N
PAT LADY ERICA 8984

G D A R TRAVELER 71
SITZ EVERELDA ENTENSE 1137
3 BAR SPIKE 1766
SITZ BARAMERE JET 155

O C C EMBLAZON 854E
O C C JUANADA 709V
N BAR IMPACT U1253
PAT PIED PIPER 921

Coalition is one of the best kept secrets here and has created a proof of production the old school way; having ran in multi-sire groups his first two years. Coalition has a herd bull look and recent visitors have commented on the quality of condition and foot he has for an 8-year-old bull. He looks a lot like his Pathfinder sire, Sitz Alliance 6595 when I saw him as an aged bull, and carries the maternal legacy of two generations of Lady Erica donors. His daughters have great udder structure – maybe our best.

SIRE

J

CHAPMAN MEMENTO 7542E

Tattoo: SWC 7542E DOB: April 15 2017 REG#: 2071767



SPRING '22

BW -0.3
WW 34
YW 52
M 25
CE 9.0
MCE 8.0

SINCLAIR MEMENTO 8RL5
CHAPMAN MEMENTO 0505X
CROWFOOT REV ERICA 5752R

S B R WATERTON 6148S
CHAPMAN ROSE 802U
CHAPMAN ROSE 631S

SINCLAIR RITO LEGACY 3R9
SINCLAIR LADY 06S3 4465
O C C JOKER 620J
CROWFOOT ERICA 3906N

LIONHEART OF WICKWIRE
OCTORARO MISS WIX 803
CROWFOOT VENTURE 1698L
CHAPMAN ROSE 429P

Retained from a very competitive 2017 calf crop to carry on the Memento sire line. As you will see, there are a lot of "Memento" daughters contributing bulls to the sale this year. They are efficient in their type and possess very strong udder structure. 7542 is proud in his look and exhibits extra length of spine. Like his paternal brothers that have worked here, covering 60 cows in a season was like a morning snack. His dam annually contributed one of the better calves and went on to earn a progeny weaning ratio 10 @ 107.

EPD EXPLANATION

EPD's are predictions on how each bull rates against his own contemporary group and the rest of the breed. EPD's evaluate group averages and offspring's performance, however they cannot predict individual performance or weights.

For example, if Bull A (WW EPD of +10) & Bull B (WW of +60) were randomly mated with 10 similar cows, we would expect the group avg. weaning weight of Bull A's offspring to be 50 lbs. lighter than Bull B's (60 - 10 = 50).

SIRE

K

WRA CEDAR RUN D2

Tattoo: IMP 020D DOB: February 06 2016 REG#: 2012142



SPRING '22

BW 0.1
WW 21
YW 53
M 35
CE 6.0
MCE 7.0

COLE CREEK CEDAR RIDGE 1V
W R A CEDAR RUN A7
W R A EILEEN BAR 115P

W R A ARISTOCRAT R4
W R A SARAH 237W
W R A SARAH 237G

COLE CREEK BLACK CEDAR 46P
COLE CREEK CLOVANADA 49S
CAR DUKE 104
W R A EILEEN BAR 115M

W R A ARISTOCRAT M1
W R A ROYAL LADY 392J
BASIN RAINMAKER 654X
W R A SARAH 37C

D2 was acquired as the high selling bull in the 2017 Headquarters for Hindquarters sale in Virginia. He personifies balanced trait production because he is not extreme in any trait. He was a moderate framed, long bodied, big volume individual that has excellent base width, a big foot and lots of scrotal. His dam boasts a flawless phenotype and she flourishes in a fescue-based forage environment. The daughters of D2 have been very productive here, and the sons on offer are easily noticed in the bull pen.

BW	Birth Weight - expressed in pounds, is a prediction of a sire's ability to transmit birth weight to his progeny
WW	Weaning Weight - expressed in pounds, is a predictor of a sire's ability to transmit weaning growth to his progeny
YW	Yearling Weight - expressed in pounds, is a predictor of a sire's ability to transmit yearling growth to his progeny.
Milk	A predictor of a sire's genetic merit for milk and mothering ability as expressed in his daughters
CE	Calving Ease Direct (CE), is expressed as a difference in percentage of unassisted births, with a higher value indicating greater calving ease in first-calf heifers. It predicts the average difference in ease with which a sire's calves will be born when he is bred to first-calf heifers.
MCE	Maternal Calving Ease (MCE) is expressed as a difference in percentage of unassisted births with a higher value indicating greater calving ease in first-calf daughters. It predicts the average ease with which a sire's daughters will calve as first-calf heifers when compared to daughters of other sires.

BREED AVERAGES

Black Angus Breed Averages are compiled from the total number of Black Angus calves registered in 2020 to compare the BLACK ANGUS BULLS in this catalogue to:

	BLACK ANGUS
BW	+2.1
WW	+49
YW	+86
M	+22
CE	+3.3
MCE	+6.7

2 YEAR OLD *Bulls*



LOT 1 **CHAPMAN ROBUST 0816**
 Tattoo: SWC 0816H DOB: April 18 2020 REG#: 2243874

SPRING '22	BC SURVEYOR 680D	BC EAGLE EYE 110-7
BW 1.5	BC ROBUST 0807	BC 2266 PRIDES LASS 4132 680
WW 43	BC 327-8 CP BELLE 0-807	BC PURE PRIDE 327-8
YW 67		BC 607 CP BELLE MF 807
M 18	CROWFOOT JOKER 6172S	O C C JOKER 620J
CE 5.5	XO CROWFOOT PRINCENE 2413Z	CFCC 1801L
MCE -2.5	XO CROWFOOT PRINCENE 968W	CROWFOOT EQUATION 5793R
		CROWFOOT PRINCENE 3731N

DAM'S PROD

BW	WW	205	WR	YR	AOD	NR
77	815	719	109	95	8	7/104

LOT 2 **CHAPMAN PAY DIRT 0868**
 Tattoo: SWC 0868H DOB: April 28 2020 REG#: 2243907

SPRING '22	BASIN PAYWEIGHT 1682	BASIN PAYWEIGHT 006S
BW 20	SITZ PAYWEIGHT 749E	21AR O LASS 7017
WW 53	SITZ FOREVER LADY 612T	CONNEALY THUNDER
YW 88		SITZ FOREVER LADY 63M
M 25	SINCLAIR RITO 9R7	RITO REVOLVE DR5
CE 3.5	CHAPMAN HOLLY 1047Y	SINCLAIR K BTY 6PV5 25F3
MCE 6.0	DDA HOLLY 239	O C C EMBLAZON 854E
		DDA HOLLY 084

DAM'S PROD

BW	WW	205	WR	YR	AOD	NR
86	750	689	105	96	9	8/109



LOT	4	CHAPMAN ROBUST 0922				
		Tattoo: SWC 0922H DOB: May 17 2020 REG#: 2243919				
SPRING '22	BW	2.4	BC SURVEYOR 680D BC ROBUST 0807 BC 327-8 CP BELLE 0-807	BC EAGLE EYE 110-7 BC 2266 PRIDES LASS 4132 680 BC PURE PRIDE 327-8 BC 607 CP BELLE MF 807		
	WW	65				
	YW	97				
	M	15	SINCLAIR RITO 9R7 CHAPMAN IDELETTE 2013Z CHAPMAN IDELETTE 764T	RITO REVOLVE 0R5 SINCLAIR K BTY 6PV5 25F3 DDA EMBLAZON 27C HAPPYVALE NJP IDELETTE 111M		
	CE	2.5				
	MCE	-5.5				
			DAM'S PROD			
	BW	WW	205	WR	YR	AOD
	85	730	724	110	98	8
						NR
						7/103

LOT	3	CHAPMAN ROBUST 0757				
		Tattoo: SWC 0757H DOB: April 05 2020 REG#: 2243845				
SPRING '22	BW	14	BC SURVEYOR 680D BC ROBUST 0807 BC 327-8 CP BELLE 0-807	BC EAGLE EYE 110-7 BC 2266 PRIDES LASS 4132 680 BC PURE PRIDE 327-8 BC 607 CP BELLE MF 807		
	WW	46				
	YW	72				
	M	18	CHAPMAN RITO LEGACY 218U CHAPMAN EILEEN 2036Z CHAPMAN EILEEN 006X	SINCLAIR RITO LEGACY 3R9 PAT LADY ERICA 8984 V D A R RITO 953 CHAPMAN EILEEN 791T		
	CE	3.5				
	MCE	-20				
			DAM'S PROD			
	BW	WW	205	WR	YR	AOD
	85	805	678	103	107	8
						NR
						7/97

LOT	5	CHAPMAN ROBUST 0854				
		Tattoo: SWC 0854H DOB: April 25 2020 REG#: 2243900				
SPRING '22	BW	1.8	BC SURVEYOR 680D BC ROBUST 0807 BC 327-8 CP BELLE 0-807	BC EAGLE EYE 110-7 BC 2266 PRIDES LASS 4132 680 BC PURE PRIDE 327-8 BC 607 CP BELLE MF 807		
	WW	50				
	YW	79				
	M	21	CROWFOOT EQUATION 5793R CHAPMAN K PRIDE 2039Z CHAPMAN PRIDE 4409	O C C LEGACY 839L CROWFOOT FORKS 755K CROWFOOT VENTURE 1698L CHAPMAN PRIDE 226M		
	CE	4.5				
	MCE	-10				
			DAM'S PROD			
	BW	WW	205	WR	YR	AOD
	81	815	738	112	108	8
						NR
						7/119



LOT 6



LOT 8



LOT 7



LOT 8

LOT 6 **CHAPMAN PAY DIRT 0782**
 Tattoo: SWC 0782H DOB: April 09 2020 REG#: 2243857

SPRING '22	BASIN PAYWEIGHT 1682 SITZ PAYWEIGHT 749E SITZ FOREVER LADY 612T	BASIN PAYWEIGHT 006S 21AR O LASS 7017 CONNELLY THUNDER SITZ FOREVER LADY 63M				
BW 22	CROWFOOT JOKER 6172S CHAPMAN HANNI 1010Y CHAPMAN HANNI 4401	O C C JOKER 620J CFCC 1801L CROWFOOT BRUNO 1670L RED CHAPMAN HANNI 002K				
WW 43						
YW 78						
M 27						
CE 3.0						
MCE 8.0						
		DAM'S PROD				
BW	WW	205	WR	YR	AOD	NR
77	725	620	94	102	9	8/99

LOT 8 **CHAPMAN TITANIUM 0798**
 Tattoo: SWC 0798H DOB: April 16 2020 REG#: 2243864

SPRING '22	MC CUMBER TITANIUM 3127 MC CUMBER TITANIUM 5197 MISS WIX 062 OF MC CUMBER	SINCLAIR FORTUNATE SON MSS WIX 926 OF MC CUMBER SITZ RAINMAKER 6536 MISS WIX 6145 OF MC CUMBER				
BW 24	SINCLAIR RITO 9R7 CHAPMAN NELLIE 5140C CHAPMAN NELLIE 8039U	RITO REVOLVE OR5 SINCLAIR K BTY 6PV5 25F3 O C C MOONSHINE 740M GLADWALL BELLE L NELLIE 6247				
WW 51						
YW 90						
M 18						
CE 3.0						
MCE 2.0						
		DAM'S PROD				
BW	WW	205	WR	YR	AOD	NR
85	745	654	100	109	5	4/101

LOT 7 **CHAPMAN TITANIUM 0844**
 Tattoo: SWC 0844H DOB: April 23 2020 REG#: 2243893

SPRING '22	MC CUMBER TITANIUM 3127 MC CUMBER TITANIUM 5197 MISS WIX 062 OF MC CUMBER	SINCLAIR FORTUNATE SON MSS WIX 926 OF MC CUMBER SITZ RAINMAKER 6536 MISS WIX 6145 OF MC CUMBER				
BW 30	SINCLAIR RITO 9R7 CHAPMAN PRINCESS 5096C CHAPMAN PRINCESS 751T	RITO REVOLVE OR5 SINCLAIR K BTY 6PV5 25F3 RED SSS JUSTICE 174R CHAPMAN PRINCESS 4413				
WW 50						
YW 86						
M 21						
CE 2.0						
MCE 3.0						
		DAM'S PROD				
BW	WW	205	WR	YR	AOD	NR
92	765	690	105	104	5	4/106

LOT 9 **CHAPMAN TITANIUM 0834**
 Tattoo: SWC 0834H DOB: April 21 2020 REG#: 2243886

SPRING '22	MC CUMBER TITANIUM 3127 MC CUMBER TITANIUM 5197 MISS WIX 062 OF MC CUMBER	SINCLAIR FORTUNATE SON MSS WIX 926 OF MC CUMBER SITZ RAINMAKER 6536 MISS WIX 6145 OF MC CUMBER				
BW 19	MC CUMBER 8R101 RITO 161 CHAPMAN ZARA 5156C CHAPMAN KIWI ZARA 101Y	SINCLAIR ENTREPRENEUR 8R101 B PRIDE 463 OF MC CUMBER CHAPMAN RITO LEGACY 218U CHAPMAN KIWI 919W				
WW 35						
YW 65						
M 20						
CE 5.0						
MCE 4.5						
		DAM'S PROD				
BW	WW	205	WR	YR	AOD	NR
93	685	614	93	92	5	4/98



LOT 10 **CHAPMAN EMULATE 0864**
 Tattoo: SWC 0864H DOB: April 27 2020 REG#: 2243905

SPRING '22	MC CUMBER FORTUNATE 307 MC CUMBER 307 FORTUNATE 7141 B PRIDE 2143 OF MC CUMBER	SINCLAIR FORTUNATE SON MISS WIX 9122 OF MC CUMBER O C C TREMENDOUS 619T B PRIDE 0135 OF MC CUMBER
BW 16	COLE CREEK CEDAR RIDGE 181 CHAPMAN MERLE 4026B XO CROWFOOT MERLE 1442Y	COLE CREEK CEDAR RIDGE 1V COLE CREEK JUANADACAP 42P XO CROWFOOT JOKER 8814U CROWFOOT MERLE 6338S
WW 44		
YW 80		
M 24		
CE 6.0		
MCE 5.5		

DAM'S PROD

BW	WW	205	WR	YR	AOD	NR
84	695	636	97	100	6	5/97

LOT 13 **CHAPMAN PAY DIRT 0793**
 Tattoo: SWC 0793H DOB: April 14 2020 REG#: 2243862

SPRING '22	BASIN PAYWEIGHT 1682 SITZ PAYWEIGHT 749E SITZ FOREVER LADY 612T	BASIN PAYWEIGHT 006S 21AR O LASS 7017 CONNEALY THUNDER SITZ FOREVER LADY 63M
BW 17	CROWFOOT JOKER 6172S CHAPMAN B PRIDE 1056Y CHAPMAN PRIDE 3327	O C C JOKER 620J CFCC 1801L CROWFOOT BRUNO 1670L GLADWALL B GAY PRIDE 5128
WW 41		
YW 72		
M 29		
CE 4.0		
MCE 8.0		

DAM'S PROD

BW	WW	205	WR	YR	AOD	NR
85	785	683	104	113	9	8/112

LOT 11 **CHAPMAN EMULATE 0867**
 Tattoo: SWC 0867H DOB: April 28 2020 REG#: 2243906

SPRING '22	MC CUMBER FORTUNATE 307 MC CUMBER 307 FORTUNATE 7141 B PRIDE 2143 OF MC CUMBER	SINCLAIR FORTUNATE SON MISS WIX 9122 OF MC CUMBER O C C TREMENDOUS 619T B PRIDE 0135 OF MC CUMBER
BW 21	CHAPMAN MEMENTO 0505X CHAPMAN B PRIDE 4097B CHAPMAN B PRIDE 9013W	SINCLAIR MEMENTO 8RL5 CROWFOOT REV ERICA 5752R CROWFOOT MACHO 4549P CHAPMAN PRIDE 729T
WW 41		
YW 76		
M 19		
CE 6.5		
MCE 5.5		

DAM'S PROD

BW	WW	205	WR	YR	AOD	NR
85	735	675	103	90	6	5/99

LOT 14 **CHAPMAN ROBUST 0845**
 Tattoo: SWC 0845H DOB: April 23 2020 REG#: 2243894

SPRING '22	BC SURVEYOR 680D BC ROBUST 0807 BC 327-8 CP BELLE 0-807	BC EAGLE EYE 110-7 BC 2266 PRIDES LASS 4132 680 BC PURE PRIDE 327-8 BC 607 CP BELLE MF 807
BW 18	CHAPMAN EQUATION 8541U CHAPMAN KIWI 3088A CHAPMAN KIWI 634S	CROWFOOT EQUATION 5793R CHAPMAN NELLIE 210M PINEBANK WAIGROUP 41/97 BARB WALL P ROSE LEE 5140
WW 47		
YW 70		
M 19		
CE 3.0		
MCE -0.5		

DAM'S PROD

BW	WW	205	WR	YR	AOD	NR
81	725	653	99	93	7	6/100

LOT 12 **CHAPMAN PAY DIRT 0809**
 Tattoo: SWC 0809H DOB: April 17 2020 REG#: 2243872

SPRING '22	BASIN PAYWEIGHT 1682 SITZ PAYWEIGHT 749E SITZ FOREVER LADY 612T	BASIN PAYWEIGHT 006S 21AR O LASS 7017 CONNEALY THUNDER SITZ FOREVER LADY 63M
BW 16	SINCLAIR RITO 9R7 CHAPMAN G PRIDE 1064Y CHAPMAN G PRIDE 608S	RITO REVOLVE 0R5 SINCLAIR K BTY 6PV5 25F3 CROWFOOT VENTURE 1698L CHAPMAN PRIDE 416P
WW 45		
YW 80		
M 25		
CE 4.5		
MCE 8.0		

DAM'S PROD

BW	WW	205	WR	YR	AOD	NR
82	780	686	104	105	9	8/100

LOT 15 **CHAPMAN ROBUST 0800**
 Tattoo: SWC 0800H DOB: April 16 2020 REG#: 2243866

SPRING '22	BC SURVEYOR 680D BC ROBUST 0807 BC 327-8 CP BELLE 0-807	BC EAGLE EYE 110-7 BC 2266 PRIDES LASS 4132 680 BC PURE PRIDE 327-8 BC 607 CP BELLE MF 807
BW 12	COLEMAN MISSING LINK 9267 CHAPMAN NELLIE 2037Z CHAPMAN NELLIE 0124X	O C C MISSING LINK 830M BOHI PURE PRIDE 6096 SINCLAIR MEMENTO 8RL5 CHAPMAN NELLIE 210M
WW 47		
YW 79		
M 17		
CE 6.0		
MCE 0.0		

DAM'S PROD

BW	WW	205	WR	YR	AOD	NR
75	785	687	105	100	8	7/102



LOT 16 **CHAPMAN ROBUST 0852**
 Tattoo: SWC 0852H DOB: April 25 2020 REG#: 2243899

SPRING '22	BC SURVEYOR 680D	BC EAGLE EYE 110-7
BW 1.7	BC ROBUST 0807	BC 2266 PRIDES LASS 4132 680
WW 48	BC 327-8 CP BELLE 0-807	BC PURE PRIDE 327-8
YW 70		BC 607 CP BELLE MF 807
M 18	CROWFOOT JOKER 6172S	O C C JOKER 620J
CE 4.0	CHAPMAN PRIDE 3081A	CFCC 1801L
MCE 0.0	CHAPMAN PRIDE 775T	CHAPMAN ALLIANCE 259M
		KLUZAK PRIDE 25G

DAM'S PROD

BW	WW	205	WR	YR	AOD	NR
80	730	662	101	93	7	6/104



LOT 17 **CHAPMAN ROBUST 0832H**
 Tattoo: SWC 0832H DOB: April 21 2020 REG#: Unregistered

SPRING '22	BC SURVEYOR 680D	BC EAGLE EYE 110-7
BW -	BC ROBUST 0807	BC 2266 PRIDES LASS 4132 680
WW -	BC 327-8 CP BELLE 0-807	BC PURE PRIDE 327-8
YW -		-
M -	ANGUS	-
CE -		-
MCE -		-

DAM'S PROD

BW	WW	205	WR	YR	AOD	NR
92	705	631	96	117	-	-

LOT 19 **CHAPMAN ROBUST 0950**
 Tattoo: SWC 0950H DOB: June 07 2020 REG#: 2243925

SPRING '22	BC SURVEYOR 680D	BC EAGLE EYE 110-7
BW 0.8	BC ROBUST 0807	BC 2266 PRIDES LASS 4132 680
WW 46	BC 327-8 CP BELLE 0-807	BC PURE PRIDE 327-8
YW 71		BC 607 CP BELLE MF 807
M 19	CROWFOOT EQUATION 5793R	O C C LEGACY 839L
CE 6.5	XO CROWFOOT MERLE 337A	CROWFOOT FORKS 755K
MCE 0.0	CROWFOOT MERLE 6338S	O C C LEGACY 839L
		C H MERLE 9701

DAM'S PROD

BW	WW	205	WR	YR	AOD	NR
80	635	691	105	101	7	6/103

LOT 18 **CHAPMAN ROBUST 0904**
 Tattoo: SWC 0904H DOB: May 10 2020 REG#: 2243914

SPRING '22	BC SURVEYOR 680D	BC EAGLE EYE 110-7
BW 1.7	BC ROBUST 0807	BC 2266 PRIDES LASS 4132 680
WW 44	BC 327-8 CP BELLE 0-807	BC PURE PRIDE 327-8
YW 64		BC 607 CP BELLE MF 807
M 14	CHAPMAN LEGACY 026S	O C C LEGACY 839L
CE 4.5	CHAPMAN ROSE 2089Z	PAT LADY ERICA 8984
MCE -0.5	CHAPMAN ROSE 728T	CROWFOOT MACHO 4549P
		CHAPMAN ROSE 317N

DAM'S PROD

BW	WW	205	WR	YR	AOD	NR
86	695	670	102	93	8	7/100

LOT 20 **CHAPMAN PAY DIRT 0831**
 Tattoo: SWC 0831H DOB: April 21 2020 REG#: 2243884

SPRING '22	BASIN PAYWEIGHT 1682	BASIN PAYWEIGHT 006S
BW 2.4	SITZ PAYWEIGHT 749E	21AR O LASS 7017
WW 41	SITZ FOREVER LADY 612T	CONNELLY THUNDER
YW 73		SITZ FOREVER LADY 63M
M 27	CROWFOOT JOKER 6172S	O C C JOKER 620J
CE 2.5	CHAPMAN ZARA JUMBO 1008Y	CFCC 1801L
MCE 8.5	CROWFOOT ZARA JUMBO 5812R	O C C GLORY 950G
		CROWFOOT FORKS 642K

DAM'S PROD

BW	WW	205	WR	YR	AOD	NR
69	745	664	101	90	9	8/100



LOT 23 **CHAPMAN ROBUST 0921**
 Tattoo: SWC 0921H DOB: May 17 2020 REG#: 2243918

SPRING '22	BC SURVEYOR 680D	BC EAGLE EYE 110-7
BW 1.3	BC ROBUST 0807	BC 2266 PRIDES LASS 4132 680
WW 58	BC 327-8 CP BELLE 0-807	BC PURE PRIDE 327-8
YW 84		BC 607 CP BELLE MF 807
M 17	MC CUMBER 536P EXT 7196	SITZ JLS EMULATION EXT 536P
CE 4.0	CHAPMAN LURA 2019Z	LASSIE 434 OF MC CUMBER
MCE -1.0	CHAPMAN LURA 9073W	CROWFOOT EQUATION 5793R
		CHAPMAN LURA 446P

DAM'S PROD

BW	WW	205	WR	YR	AOD	NR
80	725	719	109	90	8	7/104

LOT 21 **CHAPMAN PAY DIRT 0826**
 Tattoo: SWC 0826H DOB: April 20 2020 REG#: 2243880

SPRING '22	BASIN PAYWEIGHT 1682	BASIN PAYWEIGHT 006S
BW 0.6	SITZ PAYWEIGHT 749E	21AR 0 LASS 7017
WW 37	SITZ FOREVER LADY 612T	CONNEALY THUNDER
YW 68		SITZ FOREVER LADY 63M
M 30	CROWFOOT JOKER 6172S	O C C JOKER 620J
CE 7.5	CHAPMAN BARDOLENE 1013Y	CFCC 1801L
MCE 10.0	CROWFOOT BARDOLENE 5066R	RED 5L NORSEMAN KING 2291
		CROWFOOT BARDOLENE 9133J

DAM'S PROD

BW	WW	205	WR	YR	AOD	NR
79	685	610	93	92	9	8/107

LOT 24 **CHAPMAN DUECE 0783**
 Tattoo: SWC 0783H DOB: April 10 2020 REG#: Percentage

SPRING '22	RF CAPTAIN BLACK 430B	SVS CAPTAIN MORGAN 11Z
BW -	CIRCLE K DIESEL 34D	TLG FLIRTIN WITH YOU
WW -	D F L L COF I J 982	DO BL CAR D DRIFTWOOD 83
YW -		MC BL BORDELIA 024K
M -	COLE CREEK CEDAR RIDGE 181	J L B L C K CEDAR RIDGE 1V
CE -	CHAPMAN ROSE 4191B	COLE CREEK JUANADACAP 42P
MCE -	CHAPMAN ROSE 926W	CROWFOOT EQUATION 5793R
		CHAPMAN ROSE 429P

DAM'S PROD

BW	WW	205	WR	YR	AOD	NR
94	770	662	100	103	6	5/99

LOT 22 **CHAPMAN ROBUST 0906**
 Tattoo: SWC 0906H DOB: May 11 2020 REG#: 2243915

SPRING '22	BC SURVEYOR 680D	BC EAGLE EYE 110-7
BW 1.3	BC ROBUST 0807	BC 2266 PRIDES LASS 4132 680
WW 46	BC 327-8 CP BELLE 0-807	BC PURE PRIDE 327-8
YW 71		BC 607 CP BELLE MF 807
M 17	CHAPMAN RITO LEGACY 218U	SINCLAIR RITO LEGACY 3R9
CE 3.0	CHAPMAN PRINCENE 3128A	PAT LADY ERICA 8984
MCE -2.0	CHAPMAN PRINCENE 3314	SITZ TRAVELER 9929
		GLADWALL PRINCENE 6320

DAM'S PROD

BW	WW	205	WR	YR	AOD	NR
83	655	634	96	95	7	6/99

DAM'S PROD

AOD: Age of Dam in 2020

NR: Nursing Ratio defined as the dams averaged production record.

Example: 8/107 means the cow weaned 8 calves that averaged 107 with 100 being average. Although there are outliers, the cows that tend to have the most longevity ratio 97-103.



LOT 25 **CHAPMAN STEADFAST 0814**
Tattoo: SWC 0814H DOB: April 18 2020 REG#: Pending

SPRING '22	MC CUMBER STEADFAST 635 MC CUMBER STEADFAST 809 LASSIE 706 OF MC CUMBER	MC CUMBER TITANIUM 3127 MISS WIX 2003 OF MC CUMBER S A V 8180 TRAVELER 004 LASSIE 0006 OF MC CUMBER
BW 20	CHAPMAN MEMENTO 3589A CHAPMAN ROSEWALL 7054E CHAPMAN ROSEWALL 2027Z	CHAPMAN MEMENTO 0505X CHAPMAN KAWICH LADY 8065U MC CUMBER 536P EXT 7196 CHAPMAN ROSEWALL 9015W
WW 52		
YW 92		
M 26		
CE 5.5		
MCE 6.3		

DAM'S PROD

BW	WW	205	WR	YR	ADD	NR
91	745	697	106	104	3	2/104

LOT 27 **CHAPMAN STEADFAST 0847**
Tattoo: SWC 0847H DOB: April 23 2020 REG#: Pending

SPRING '22	MC CUMBER STEADFAST 635 MC CUMBER STEADFAST 809 LASSIE 706 OF MC CUMBER	MC CUMBER TITANIUM 3127 MISS WIX 2003 OF MC CUMBER S A V 8180 TRAVELER 004 LASSIE 0006 OF MC CUMBER
BW -	CHAPMAN ERICA 7001E CHAPMAN ERICA 3100A	SINCLAIR RITO 9R7 CHAPMAN ERICA 928W
WW -		
YW -		
M -		
CE -		
MCE -		

DAM'S PROD

BW	WW	205	WR	YR	ADD	NR
83	685	655	100	103	3	2/103

LOT 26 **CHAPMAN STEADFAST 0767**
Tattoo: SWC 0767H DOB: April 11 2020 REG#: Pending

SPRING '22	MC CUMBER STEADFAST 635 MC CUMBER STEADFAST 809 LASSIE 706 OF MC CUMBER	MC CUMBER TITANIUM 3127 MISS WIX 2003 OF MC CUMBER S A V 8180 TRAVELER 004 LASSIE 0006 OF MC CUMBER
BW 10	MC CUMBER 8R101 RITO 161 CHAPMAN ROSE 7144E CHAPMAN KIWI ROSE 011X	SINCLAIR ENTREPRENEUR 8R101 B PRIDE 463 OF MC CUMBER SHALOM WAIGROUP 519/94 CHAPMAN ROSE 621S
WW 48		
YW 83		
M 23		
CE 6.5		
MCE 6.5		

DAM'S PROD

BW	WW	205	WR	YR	ADD	NR
95	750	686	104	104	3	2/111

LOT 28 **CHAPMAN STEADFAST 0815**
Tattoo: SWC 0815H DOB: April 18 2020 REG#: Pending

SPRING '22	MC CUMBER STEADFAST 635 MC CUMBER STEADFAST 809 LASSIE 706 OF MC CUMBER	MC CUMBER TITANIUM 3127 MISS WIX 2003 OF MC CUMBER S A V 8180 TRAVELER 004 LASSIE 0006 OF MC CUMBER
BW 15	CHAPMAN KING TEN 4522B CHAPMAN NELLIE 7131E CHAPMAN NELLIE 8039U	CROWFOOT 9052W C H BLACKBIRD 9717 O C C MOONSHINE 740M GLADWALL BELLE L NELLIE 6247
WW 55		
YW 93		
M 22		
CE 5.3		
MCE 5.3		

DAM'S PROD

BW	WW	205	WR	YR	ADD	NR
90	705	662	101	97	3	2/99



LOT 29



LOT 32



LOT 30

LOT 29 **CHAPMAN STEADFAST 0808**
 Tattoo: SWC 0808H DOB: April 17 2020 REG#: Pending

SPRING '22	MC CUMBER STEADFAST 635 MC CUMBER STEADFAST 809 LASSIE 706 OF MC CUMBER	MC CUMBER TITANIUM 3127 MISS WIX 2003 OF MC CUMBER S A V 8180 TRAVELER 004 LASSIE 0006 OF MC CUMBER
BW 1.7	RUDOW'S ADMINISTRATOR 333 CHAPMAN LURA 7107E CHAPMAN LURA 4168B	RUDOW'S WHOLESOME 953 RUDOW'S MISS ERICA 962 SINCLAIR RITO 9R7 CHAPMAN LURA 1043Y
WW 49		
YW 89		
M 19		
CE 5.8		
MCE 8.3		

DAM'S PROD

BW	WW	205	WR	YR	AOD	NR
79	680	637	97	101	3	2/91

LOT 31 **CHAPMAN STEADFAST 0860**
 Tattoo: SWC 0860H DOB: April 27 2020 REG#: Pending

SPRING '22	MC CUMBER STEADFAST 635 MC CUMBER STEADFAST 809 LASSIE 706 OF MC CUMBER	MC CUMBER TITANIUM 3127 MISS WIX 2003 OF MC CUMBER S A V 8180 TRAVELER 004 LASSIE 0006 OF MC CUMBER
BW 1.6	CHAPMAN EQUATOR 4515B CHAPMAN PRIDE 7015E CHAPMAN PRIDE 5147C	COLE CREEK BLACK CEDAR 1251 CROWFOOT BLACKBIRD 6369S CHAPMAN MEMENTO 0509X CHAPMAN PRIDE 3081A
WW 55		
YW 93		
M 22		
CE 5.3		
MCE 6.3		

DAM'S PROD

BW	WW	205	WR	YR	AOD	NR
88	740	715	109	91	3	2/100

LOT 32 **CHAPMAN FORTE 0789**
 Tattoo: SWC 0789H DOB: April 14 2020 REG#: 2243859

SPRING '22	PAPA FORTE 1921 COLEMAN FORTE 752 COLEMAN DONNA 714	PAPA OPTIMA 9818 PAPA ENVIOUS BLACKBIRD 8832 CONNEALY ONWARD COLEMAN DONNA 386
BW 0.3	CHAPMAN MEMENTO 0505X CHAPMAN ROSEBUD 6059D CHAPMAN ROSEBUD 736T	SINCLAIR MEMENTO 8RL5 CROWFOOT REV ERICA 5752R D D A FAHREN 21X BEVALEN ROSEBUD 11K
WW 36		
YW 62		
M 25		
CE 9.0		
MCE 7.5		

DAM'S PROD

BW	WW	205	WR	YR	AOD	NR
92	820	730	111	110	4	3/107

LOT 30 **CHAPMAN STEADFAST 0866**
 Tattoo: SWC 0866H DOB: April 28 2020 REG#: Pending

SPRING '22	MC CUMBER STEADFAST 635 MC CUMBER STEADFAST 809 LASSIE 706 OF MC CUMBER	MC CUMBER TITANIUM 3127 MISS WIX 2003 OF MC CUMBER S A V 8180 TRAVELER 004 LASSIE 0006 OF MC CUMBER
BW 1.5	CHAPMAN MEMENTO 0505X CHAPMAN PRINCESS 7067E CHAPMAN PRINCESS 751T	SINCLAIR MEMENTO 8RL5 CROWFOOT REV ERICA 5752R RED SSS JUSTICE 174R CHAPMAN PRINCESS 4413
WW 42		
YW 72		
M 24		
CE 5.8		
MCE 6.5		

DAM'S PROD

BW	WW	205	WR	YR	AOD	NR
86	660	645	98	117	3	2/105



VIEW SALE VIDEOS AT
WWW.CHAPMANCATTLE.COM



LOT 34 **CHAPMAN FORTE 0901**
 Tattoo: SWC 0901H DOB: May 10 2020 REG#: 2243913

SPRING '22	PAPA FORTE 1921	PAPA OPTIMA 9818
BW 0.4	COLEMAN FORTE 752	PAPA ENVIOUS BLACKBIRD 8832
WW 36	COLEMAN DONNA 714	CONNEALY ONWARD
YW 63		COLEMAN DONNA 386
M 24	CHAPMAN MEMENTO 0505X	SINCLAIR MEMENTO 8RL5
CE 9.3	CHAPMAN B PRIDE 6103D	CROWFOOT REV ERICA 5752R
MCE 6.8	CHAPMAN B PRIDE 8063U	O C C MOONSHINE 740M
		CHAPMAN PRIDE 3327

DAM'S PROD

BW	WW	205	WR	YR	AOD	NR
83	665	657	100	102	4	3/97

LOT 33 **CHAPMAN FORTE 0807**
 Tattoo: SWC 0807H DOB: April 17 2020 REG#: 2243871

SPRING '22	PAPA FORTE 1921	PAPA OPTIMA 9818
BW 0.4	COLEMAN FORTE 752	PAPA ENVIOUS BLACKBIRD 8832
WW 33	COLEMAN DONNA 714	CONNEALY ONWARD
YW 66		COLEMAN DONNA 386
M 24	CHAPMAN MEMENTO 0511X	SINCLAIR MEMENTO 8RL5
CE 7.5	CHAPMAN CHLOE 6114D	CROWFOOT REV ROSE 5900R
MCE 7.0	CHAPMAN CHLOE 1054Y	SINCLAIR IN TIME 9RT10
		CHAPMAN CHLOE 8017U

DAM'S PROD

BW	WW	205	WR	YR	AOD	NR
93	850	764	116	109	4	3/116

LOT 35 **CHAPMAN FORTE 0818**
 Tattoo: SWC 0818H DOB: April 18 2020 REG#: 2243876

SPRING '22	PAPA FORTE 1921	PAPA OPTIMA 9818
BW 0.8	COLEMAN FORTE 752	PAPA ENVIOUS BLACKBIRD 8832
WW 41	COLEMAN DONNA 714	CONNEALY ONWARD
YW 75		COLEMAN DONNA 386
M 26	CHAPMAN MEMENTO 0511X	SINCLAIR MEMENTO 8RL5
CE 6.0	CHAPMAN DUCHESS 6076D	CROWFOOT REV ROSE 5900R
MCE 4.5	RED CHAPMAN DUCHESS 1070Y	RED BAR-E-L WHIZ KID 256W
		RED CHAPMAN DUCHESS 770T

DAM'S PROD

BW	WW	205	WR	YR	AOD	NR
85	725	657	100	112	4	3/107

FREE DELIVERY
 TO CENTRAL POINTS IN CANADA AND BILLINGS, MT





LOT 36



LOT 38



LOT 36



LOT 38

LOT 36 **CHAPMAN FORTE 0790**
 Tattoo: SWC 0790H DOB: April 14 2020 REG#: 2243860

SPRING '22	PAPA FORTE 1921 COLEMAN FORTE 752 COLEMAN DONNA 714	PAPA OPTIMA 9818 PAPA ENVIOUS BLACKBIRD 8832 CONNEALY ONWARD COLEMAN DONNA 386				
BW 12	SINCLAIR RITO 9R7 CHAPMAN ERICA 6055D CHAPMAN ERICA 660S	RITO REVOLVE 0R5 SINCLAIR K BTY 6PV5 25F3 S A V 004 PREDOMINANT 4438 HAPPYVALE ERICA 182N				
WW 48						
YW 81						
M 23						
CE 6.3						
MCE 5.3						
	DAM'S PROD					
BW	WW	205	WR	YR	AOD	NR
86	720	644	98	110	4	3/107

LOT 38 **CHAPMAN FORTE 0933**
 Tattoo: SWC 0933H DOB: May 19 2020 REG#: 2243922

SPRING '22	PAPA FORTE 1921 COLEMAN FORTE 752 COLEMAN DONNA 714	PAPA OPTIMA 9818 PAPA ENVIOUS BLACKBIRD 8832 CONNEALY ONWARD COLEMAN DONNA 386				
BW 02	CHAPMAN MEMENTO 0511X CHAPMAN NELLIE 6121D CHAPMAN NELLIE 2037Z	SINCLAIR MEMENTO 8RL5 CROWFOOT REV ROSE 5900R COLEMAN MISSING LINK 9267 CHAPMAN NELLIE 0124X				
WW 36						
YW 71						
M 24						
CE 9.5						
MCE 7.0						
	DAM'S PROD					
BW	WW	205	WR	YR	AOD	NR
85	690	706	107	109	4	3/103

LOT 37 **CHAPMAN FORTE 0840**
 Tattoo: SWC 0840H DOB: April 23 2020 REG#: 2243889

SPRING '22	PAPA FORTE 1921 COLEMAN FORTE 752 COLEMAN DONNA 714	PAPA OPTIMA 9818 PAPA ENVIOUS BLACKBIRD 8832 CONNEALY ONWARD COLEMAN DONNA 386				
BW 19	RICHMOND BANDIT SRD 67B CHAPMAN LOVEMERE PET 6045D CHAPMAN LOVEMERE PET 708T	COLE CREEK GOLDMERE 581 CROWFOOT KELTON 2015Z CROWFOOT MACHO 4549P CROWFOOT LOVEMERE PET 5791R				
WW 44						
YW 76						
M 27						
CE 6.8						
MCE 6.3						
	DAM'S PROD					
BW	WW	205	WR	YR	AOD	NR
84	705	651	99	105	4	3/96





LOT 39 **CHAPMAN FORTE 0841**
 Tattoo: SWC 0841H DOB: April 23 2020 REG#: 2243890

SPRING '22	PAPA FORTE 1921 COLEMAN FORTE 752 COLEMAN DONNA 714	PAPA OPTIMA 9818 PAPA ENVIOUS BLACKBIRD 8832 CONNEALY ONWARD COLEMAN DONNA 386				
BW 02	CHAPMAN MEMENTO 0505X CHAPMAN PRIMROSE 6146D ZWT PRIMROSE 2286	SINCLAIR MEMENTO 8RL5 CROWFOOT REV ERICA 5752R D H D TRAVELER 6807 N BAR PRIMROSE Y3051				
WW 37	DAM'S PROD					
YW 65						
M 24						
CE 9.5						
MCE 7.0						
BW	WW	205	WR	YR	AOD	NR
85	670	621	94	90	4	3/109



LOT 40 **CHAPMAN FORTE 0846**
 Tattoo: SWC 0846H DOB: April 23 2020 REG#: 2243895

SPRING '22	PAPA FORTE 1921 COLEMAN FORTE 752 COLEMAN DONNA 714	PAPA OPTIMA 9818 PAPA ENVIOUS BLACKBIRD 8832 CONNEALY ONWARD COLEMAN DONNA 386				
BW 12	SINCLAIR RITO 9R7 CHAPMAN KAWICH LADY 6021D CHAPMAN KAWICH LADY 659S	RITO REVOLVE 0R5 SINCLAIR K BTY 6PV5 25F3 S A V 004 PREDOMINANT 4438 CHAPMAN KAWICH LADY 3316				
WW 50	DAM'S PROD					
YW 85						
M 22						
CE 7.0						
MCE 6.0						
BW	WW	205	WR	YR	AOD	NR
83	700	647	98	111	4	3/109

LOT 42 **CHAPMAN EQUATE 0827**
 Tattoo: SWC 0827H DOB: April 20 2020 REG#: 2243881

SPRING '22	CROWFOOT EQUATION 5793R CHAPMAN EQUATION 4547B CROWFOOT REV ROSE 5900R	O C C LEGACY 839L CROWFOOT FORKS 755K O C C MOONSHINE 740M CROWFOOT CH REV ROSE 1627L				
BW 1.8	CHAPMAN MEMENTO 0505X CHAPMAN PEARL 8415F CHAPMAN PEARL 2029Z	SINCLAIR MEMENTO 8RL5 CROWFOOT REV ERICA 5752R COLEMAN MISSING LINK 9267 CHAPMAN PEARL 0T16X				
WW 44	DAM'S PROD					
YW 75						
M 29						
CE 5.0						
MCE 2.5						
BW	WW	205	WR	YR	AOD	NR
84	755	746	114	113	2	1/114

LOT 41 **CHAPMAN EQUATE 0812**
 Tattoo: SWC 0812H DOB: April 17 2020 REG#: 2243873

SPRING '22	CROWFOOT EQUATION 5793R CHAPMAN EQUATION 4547B CROWFOOT REV ROSE 5900R	O C C LEGACY 839L CROWFOOT FORKS 755K O C C MOONSHINE 740M CROWFOOT CH REV ROSE 1627L				
BW 0.5	XO CROWFOOT EQU 268Z CHAPMAN ROSE 8388F CHAPMAN ROSE 920W	CROWFOOT EQUATION 5793R XO CROWFOOT DIXIE ERICA 828U SINCLAIR NET PRESENT VALUE CHAPMAN ROSE 545R				
WW 45	DAM'S PROD					
YW 76						
M 28						
CE 7.5						
MCE 5.0						
BW	WW	205	WR	YR	AOD	NR
73	740	724	110	110	2	1/110





LOT 45 **CHAPMAN COALITION 0788**
 Tattoo: SWC 0788H DOB: April 14 2020 REG#: 2243858

SPRING '22	SITZ ALLIANCE 6595	SITZ TRAVELER 8180
BW 14	CHAPMAN COALITION 4557B	SITZ BARBARAMERE JET 2698
WW 46	CROWFOOT LADY ERICA 3785N	O C C JOKER 620J
YW 75		PAT LADY ERICA 8984
M 27	SINCLAIR MEMENTO 8RL5	SINCLAIR RITO LEGACY 3R9
CE 5.5	CHAPMAN PEARL D102X	SINCLAIR LADY 06S3 4465
MCE 6.0	CROWFOOT PEARL 1828L	TOMWALL GDAR ROYCE 916
		GLADWALL L PEARL 7192

DAM'S PROD

BW	WW	205	WR	YR	AOD	NR
83	775	675	103	104	10	9/103

LOT 43 **CHAPMAN KING TEN 0760**
 Tattoo: SWC 0760H DOB: April 10 2020 REG#: 2243927

SPRING '22	CROWFOOT 9052W	CROWFOOT EQUATION 5793R
BW 18	CHAPMAN KING TEN 4522B	CROWFOOT KELTON 4790P
WW 53	C H BLACKBIRD 9717	J R SHARPSHOOTER
YW 81		C H BLACKBIRD 6604
M 21	CHAPMAN MEMENTO 0505X	SINCLAIR MEMENTO 8RL5
CE 3.0	CHAPMAN NELLIE 8324F	CROWFOOT REV ERICA 5752R
MCE 3.0	CHAPMAN NELLIE 2020Z	SINCLAIR RITO 9R7
		CHAPMAN NELLIE 744T

DAM'S PROD

BW	WW	205	WR	YR	AOD	NR
79	755	721	110	114	2	1/110

LOT 46 **CHAPMAN BLUE RIDGE 0806**
 Tattoo: SWC 0806H DOB: April 17 2020 REG#: 2243870

SPRING '22	W R A CEDAR RUN A7	COLE CREEK CEDAR RIDGE 1V
BW 1.0	WRA CEDAR RUN D2	W R A EILEEN BAR 115P
WW 29	W R A SARAH 237W	W R A ARISTOCRAT R4
YW 63		W R A SARAH 237G
M 29	MC CUMBER TITANIUM 5197	MC CUMBER TITANIUM 3127
CE 5.0	CHAPMAN HANNI 7004E	MISS WIX 062 OF MC CUMBER
MCE 5.8	CHAPMAN HANNI 4401	CROWFOOT BRUNO 1670L
		RED CHAPMAN HANNI 002K

DAM'S PROD

BW	WW	205	WR	YR	AOD	NR
90	695	652	99	112	3	2/109

LOT 44 **CHAPMAN KING TEN 0804**
 Tattoo: SWC 0804H DOB: April 17 2020 REG#: 2243868

SPRING '22	CROWFOOT 9052W	CROWFOOT EQUATION 5793R
BW 25	CHAPMAN KING TEN 4522B	CROWFOOT KELTON 4790P
WW 55	C H BLACKBIRD 9717	J R SHARPSHOOTER
YW 88		C H BLACKBIRD 6604
M 22	CHAPMAN COALITION 4557B	SITZ ALLIANCE 6595
CE 1.0	CHAPMAN G PRIDE 8383F	CROWFOOT LADY ERICA 3785N
MCE 3.0	CHAPMAN G PRIDE 1064Y	SINCLAIR RITO 9R7
		CHAPMAN G PRIDE 608S

DAM'S PROD

BW	WW	205	WR	YR	AOD	NR
77	715	703	107	96	2	1/107

LOT 47 **CHAPMAN BLUE RIDGE 0835**
 Tattoo: SWC 0835H DOB: April 22 2020 REG#: 2243887

SPRING '22	W R A CEDAR RUN A7	COLE CREEK CEDAR RIDGE 1V
BW 0.3	WRA CEDAR RUN D2	W R A EILEEN BAR 115P
WW 31	W R A SARAH 237W	W R A ARISTOCRAT R4
YW 62		W R A SARAH 237G
M 29	XO CROWFOOT EQU 268Z	CROWFOOT EQUATION 5793R
CE 7.0	CHAPMAN ROSE 7021E	XO CROWFOOT DIXIE ERICA 828U
MCE 6.3	CHAPMAN ROSE 4025B	MC CUMBER 8R101 RITO 161
		CHAPMAN KIWI ROSE 0TIX

DAM'S PROD

BW	WW	205	WR	YR	AOD	NR
79	750	710	108	108	3	2/105



LOT 49



LOT 52



LOT 49

LOT 48 **CHAPMAN BLUE RIDGE 0821**
Tattoo: SWC 0821H DOB: April 19 2020 REG#: 2243878

SPRING '22	W R A CEDAR RUN A7 WRA CEDAR RUN D2 W R A SARAH 237W	COLE CREEK CEDAR RIDGE 1V W R A EILEEN BAR 115P W R A ARISTOCRAT R4 W R A SARAH 237G
BW 0.7	CHAPMAN MEMENTO 0511X CHAPMAN ROSE LEE 7157E CHAPMAN KIWI 118Y	SINCLAIR MEMENTO 8RL5 CROWFOOT REV ROSE 5900R CHAPMAN LEGACY 026S CHAPMAN KIWI 634S
WW 25	DAM'S PROD	
YW 53	BW	WW
M 27	205	WR
CE 4.8	785	104
MCE 5.3	709	109
	108	3
	98	2/96
	12	
	11/114	

LOT 49 **CHAPMAN MEMENTO 0764**
Tattoo: SWC 0764H DOB: April 10 2020 REG#: 2243850

SPRING '22	CHAPMAN MEMENTO 0505X CHAPMAN MEMENTO 7542E CHAPMAN ROSE 802U	SINCLAIR MEMENTO 8RL5 CROWFOOT REV ERICA 5752R S B R WATERTON 6148S CHAPMAN ROSE 631S
BW 1.6	CROWFOOT EQUATION 5793R CHAPMAN K PRIDE 8067U CHAPMAN PRIDE 4409	O C C LEGACY 839L CROWFOOT FORKS 755K CROWFOOT VENTURE 1698L CHAPMAN PRIDE 226M
WW 38	DAM'S PROD	
YW 66	BW	WW
M 29	205	WR
CE 5.0	785	106
MCE 6.5	699	110
	106	12
	110	11/108
	4	
	3/101	

LOT 50 **CHAPMAN MEMENTO 0792**
Tattoo: SWC 0792H DOB: April 14 2020 REG#: 2243861

SPRING '22	CHAPMAN MEMENTO 0505X CHAPMAN MEMENTO 7542E CHAPMAN ROSE 802U	SINCLAIR MEMENTO 8RL5 CROWFOOT REV ERICA 5752R S B R WATERTON 6148S CHAPMAN ROSE 631S
BW 0.6	DDA EMBLAZON 27C CHAPMAN ROSE 8057U CHAPMAN ROSE 4405	O C C EMBLAZON 854E D D A MELISA 824 CROWFOOT VENTURE 1698L CHAPMAN ROSE 208M
WW 37	DAM'S PROD	
YW 60	BW	WW
M 25	205	WR
CE 6.5	785	108
MCE 5.5	709	98
	108	12
	98	11/114
	12	
	11/114	

LOT 51 **CHAPMAN MEMENTO 0805**
Tattoo: SWC 0805H DOB: April 17 2020 REG#: 2243869

SPRING '22	CHAPMAN MEMENTO 0505X CHAPMAN MEMENTO 7542E CHAPMAN ROSE 802U	SINCLAIR MEMENTO 8RL5 CROWFOOT REV ERICA 5752R S B R WATERTON 6148S CHAPMAN ROSE 631S
BW 1.2	SITZ ALLIANCE 6595 HAPPYVALE DELIA 35S SWENCO DELIA 13H	SITZ TRAVELER 8180 SITZ BARBARAMERE JET 2698 GET-A-LONG CAST IRON 359 SWENCO DELIA 26A
WW 34	DAM'S PROD	
YW 56	BW	WW
M 27	205	WR
CE 4.0	87	103
MCE 6.0	740	114
	679	14
	103	13/107
	114	
	14	
	13/107	

LOT 52 **CHAPMAN DUECE 0801**
Tattoo: SWC 0801H DOB: April 16 2020 REG#: Percentage

SPRING '22	RF CAPTAIN BLACK 430B CIRCLE G DIESEL 34D D BAR C BLK CORDELIA 982W	SVS CAPTAIN MORGAN 11Z TLG FLIRTIN WITH YOU DOUBLE BAR D DRIFTWOOD 83 CCC BLK CORDELIA 024K
BW -	SINCLAIR RITO 9R7 CHAPMAN KIWI 6039D CHAPMAN KIWI 634S	RITO REVOLVE 0R5 SINCLAIR K BTY 6PV5 25F3 PINEBANK WAIGROUP 41/97 BARB WALL P ROSE LEE 5140
WW -	DAM'S PROD	
YW -	BW	WW
M -	205	WR
CE -	98	100
MCE -	730	110
	658	4
	100	3/101
	110	
	4	
	3/101	



LOT 53 **CHAPMAN HOBO 0903**
 Tattoo: SWC 0903H DOB: MAY 05 2020 REG#: Unregistered

SPRING '22	-	-	-	-	-	-
BW	ANGUS	-	-	-	-	-
WW	-	-	-	-	-	-
YW	-	-	-	-	-	-
M	ANGUS	-	-	-	-	-
CE	-	-	-	-	-	-
MCE	-	-	-	-	-	-
DAM'S PROD						
BW	WW	205	WR	YR	AOD	NR
81	670	664	100	100	-	-



LOT 54 **CHAPMAN ROBUST 0772H**
 Tattoo: SWC 0772H DOB: April 12 2020 REG#: 2243853

SPRING '22	BC SURVEYOR 680D	BC EAGLE EYE 110-7				
BW	BC ROBUST 0807	BC 2266 PRIDES LASS 4132 680				
WW	BC 327-8 CP BELLE 0-807	BC PURE PRIDE 327-8				
YW		BC 607 CP BELLE MF 807				
M	SINCLAIR RITO 9R7	RITO REVOLVE OR5				
CE	CHAPMAN NEONIA 2009Z	SINCLAIR K BTY 6PV5 25F3				
MCE	CHAPMAN NEONIA 774T	CHAPMAN ALLIANCE 262M				
		HAPPYVALE T. NEONIA 131L				
DAM'S PROD						
BW	WW	205	WR	YR	AOD	NR
89	820	709	108	98	8	7/104

LOT 55 **CHAPMAN ROBUST 0880**
 Tattoo: SWC 0880H DOB: April 30 2020 REG#: 2243910

SPRING '22	BC SURVEYOR 680D	BC EAGLE EYE 110-7				
BW	BC ROBUST 0807	BC 2266 PRIDES LASS 4132 680				
WW	BC 327-8 CP BELLE 0-807	BC PURE PRIDE 327-8				
YW		BC 607 CP BELLE MF 807				
M	MC CUMBER 8R101 RITO 161	SINCLAIR ENTREPRENEUR 8R101				
CE	CHAPMAN ROSE 3080A	B PRIDE 463 OF MC CUMBER				
MCE	CHAPMAN ROSE 545R	CHAPMAN ALLIANCE 262M				
		GLADWALL ROSE OF L 1173				
DAM'S PROD						
BW	WW	205	WR	YR	AOD	NR
89	830	767	117	108	7	6/102



LOT 57



LOT 58

LOT 56 **CHAPMAN ROBUST 0775**
 Tattoo: SWC 0775H DOB: April 13 2020 REG#: 2243854

SPRING '22	BC SURVEYOR 680D	BC EAGLE EYE 110-7
BW 0.8	BC ROBUST 0807	BC 2266 PRIDES LASS 4132 680
WW 42	BC 327-8 CP BELLE 0-807	BC PURE PRIDE 327-8
YW 60		BC 607 CP BELLE MF 807
M 17	CHAPMAN MEMENTO 0505X	SINCLAIR MEMENTO 8RL5
CE 6.5	CROWFOOT LOVEMERE 3188A	CROWFOOT REV ERICA 5752R
MCE 0.0	CROWFOOT FORKS 604K	D V PRIDES COMMODORE
		BARBWALL LOVEMERE R 830
		DAM'S PROD

BW	WW	205	WR	YR	ADD	NR
77	680	590	90	97	7	6/104



LOT 60

LOT 57 **CHAPMAN ROBUST 0863**
 Tattoo: SWC 0863H DOB: April 27 2020 REG#: 2243904

SPRING '22	BC SURVEYOR 680D	BC EAGLE EYE 110-7
BW 2.0	BC ROBUST 0807	BC 2266 PRIDES LASS 4132 680
WW 49	BC 327-8 CP BELLE 0-807	BC PURE PRIDE 327-8
YW 76		BC 607 CP BELLE MF 807
M 18	CHAPMAN MEMENTO 0505X	SINCLAIR MEMENTO 8RL5
CE 4.5	CHAPMAN DUCHESS 3076A	CROWFOOT REV ERICA 5752R
MCE -2.5	CHAPMAN DUCHESS 8009U	O C C MOONSHINE 740M
		CHAPMAN DUCHESS 4403
		DAM'S PROD

BW	WW	205	WR	YR	ADD	NR
84	670	614	93	91	7	6/103

LOT 59 **CHAPMAN PAY DIRT 0817**
 Tattoo: SWC 0817H DOB: April 18 2020 REG#: 2243875

SPRING '22	BASIN PAYWEIGHT 1682	BASIN PAYWEIGHT 006S
BW 1.9	SITZ PAYWEIGHT 749E	21AR O LASS 7017
WW 39	SITZ FOREVER LADY 612T	CONNEALY THUNDER
YW 72		SITZ FOREVER LADY 63M
M 28	CROWFOOT EQUATION 5793R	O C C LEGACY 839L
CE 4.0	CHAPMAN LADY ERICA 112Y	CROWFOOT FORKS 755K
MCE 6.5	PAT LADY ERICA 8984	N BAR IMPACT U1253
		PAT PIED PIPER 921
		DAM'S PROD

BW	WW	205	WR	YR	ADD	NR
83	730	645	98	101	9	8/103

LOT 58 **CHAPMAN PAY DIRT 0916**
 Tattoo: SWC 0916H DOB: May 15 2020 REG#: 2243916

SPRING '22	BASIN PAYWEIGHT 1682	BASIN PAYWEIGHT 006S
BW 16	SITZ PAYWEIGHT 749E	21AR O LASS 7017
WW 38	SITZ FOREVER LADY 612T	CONNEALY THUNDER
YW 69		SITZ FOREVER LADY 63M
M 26	SINCLAIR RITO LEGACY 3R9	R R RITO 707
CE 4.0	CHAPMAN LADY ERICA 108Y	IDEAL 4465 OF 6807 4286
MCE 7.0	PAT LADY ERICA 8984	N BAR IMPACT U1253
		PAT PIED PIPER 921
		DAM'S PROD

BW	WW	205	WR	YR	ADD	NR
79	720	708	108	108	9	8/107

LOT 60 **CHAPMAN PAY DIRT 0830**
 Tattoo: SWC 0830H DOB: April 21 2020 REG#: 2243883

SPRING '22	BASIN PAYWEIGHT 1682	BASIN PAYWEIGHT 006S
BW 1.3	SITZ PAYWEIGHT 749E	21AR O LASS 7017
WW 37	SITZ FOREVER LADY 612T	CONNEALY THUNDER
YW 68		SITZ FOREVER LADY 63M
M 27	CHAPMAN RITO LEGACY 218U	SINCLAIR RITO LEGACY 3R9
CE 5.5	CHAPMAN KIWI ZARA 10Y	PAT LADY ERICA 8984
MCE 10.0	CHAPMAN KIWI 919W	CROWFOOT MACHO 4549P
		CHAPMAN KIWI 661S
		DAM'S PROD

BW	WW	205	WR	YR	ADD	NR
85	670	600	91	103	9	8/104



LOT 62



LOT 64

LOT 61 **CHAPMAN PAY DIRT 0929**
Tattoo: SWC 0929H DOB: May 18 2020 REG#: 2243920

SPRING '22	BASIN PAYWEIGHT 1682 SITZ PAYWEIGHT 749E SITZ FOREVER LADY 612T	BASIN PAYWEIGHT 006S 21AR O LASS 7017 CONNEALY THUNDER SITZ FOREVER LADY 63M
BW 21	SINCLAIR IN TIME 9RT10 CHAPMAN PEARL 1024Y CHAPMAN PEARL 8061U	LEACHMAN RIGHT TIME N BAR ENCHANTRESS 4908 CROWFOOT EQUATION 5793R CHAPMAN PEARL 4404
WW 41		
YW 80		
M 30		
CE 2.5		
MCE 9.5		DAM'S PROD

BW	WW	205	WR	YR	AOD	NR
82	660	657	100	99	9	8/106

LOT 64 **CHAPMAN EMULATE 0833**
Tattoo: SWC 0833H DOB: April 21 2020 REG#: 2243885

SPRING '22	MC CUMBER FORTUNATE 307 MC CUMBER 307 FORTUNATE 7141 B PRIDE 2143 OF MC CUMBER	SINCLAIR FORTUNATE SON MISS WIX 9122 OF MC CUMBER O C C TREMENDOUS 619T B PRIDE 0135 OF MC CUMBER
BW 14	CHAPMAN MEMENTO 0505X CHAPMAN GOLDIE 4084B CHAPMAN GOLDIE 9044W	SINCLAIR MEMENTO 8RL5 CROWFOOT REV ERICA 5752R CROWFOOT EQUATION 5793R CHAPMAN GOLDIE 234M
WW 36		
YW 67		
M 24		
CE 7.0		
MCE 5.5		DAM'S PROD

BW	WW	205	WR	YR	AOD	NR
81	730	652	99	99	6	5/97

LOT 62 **CHAPMAN PAY DIRT 0799**
Tattoo: SWC 0799H DOB: April 16 2020 REG#: 2243865

SPRING '22	BASIN PAYWEIGHT 1682 SITZ PAYWEIGHT 749E SITZ FOREVER LADY 612T	BASIN PAYWEIGHT 006S 21AR O LASS 7017 CONNEALY THUNDER SITZ FOREVER LADY 63M
BW 10	SINCLAIR HYDRO 90K6 CHAPMAN PRISCILLA 1014Y CHAPMAN PRISCILLA 9021W	O C C KIDDO 832K DMF SINCLAIR ERISKAY 4E8 2N1 CROWFOOT MACHO 4549P RED CHAPMAN PRISCILLA 732T
WW 38		
YW 71		
M 25		
CE 7.0		
MCE 10.5		DAM'S PROD

BW	WW	205	WR	YR	AOD	NR
93	710	625	95	101	9	8/97

LOT 65 **CHAPMAN TITANIUM 0874**
Tattoo: SWC 0874H DOB: April 27 2020 REG#: 2243908

SPRING '22	MC CUMBER TITANIUM 3127 MC CUMBER TITANIUM 5197 M S T L D Z OF MC CUMBER	SINCLAIR FORTUNATE SON MSS WIX 926 OF MC CUMBER NITRO MAKER 6536 HLSV 6145 OF MC CUMBER
BW 22	CHAPMAN MEMENTO 0513X CHAPMAN ZARA BOND 5080C CHAPMAN IDEAL 527R	CHAPMAN MEMENTO 8RL5 CROWFOOT LOVEMERE PET 5791R MC CUMBER 7111 TOTAL VALUE BARB WALL ZARA BOND 469
WW 35		
YW 64		
M 24		
CE 4.0		
MCE 4.0		DAM'S PROD

BW	WW	205	WR	YR	AOD	NR
80	625	577	88	92	5	4/98

LOT 63 **CHAPMAN PAY DIRT 0936**
Tattoo: SWC 0936H DOB: May 21 2020 REG#: 2243923

SPRING '22	BASIN PAYWEIGHT 1682 SITZ PAYWEIGHT 749E SITZ FOREVER LADY 612T	BASIN PAYWEIGHT 006S 21AR O LASS 7017 CONNEALY THUNDER SITZ FOREVER LADY 63M
BW 1.8	SINCLAIR RITO 9R7 CHAPMAN ZARA BAND 1060Y CHAPMAN ZARA BAND 677S	RITO REVOLVE 0R5 SINCLAIR K BTY 6PV5 25F3 CROWFOOT VENTURE 1698L CHAPMAN ZARA BAND 437P
WW 48		
YW 84		
M 28		
CE 3.5		
MCE 7.5		DAM'S PROD

BW	WW	205	WR	YR	AOD	NR
94	720	726	111	-	9	8/109



SINCLAIR RITO 9R7

LOT 66 **CHAPMAN TITANIUM 0848**
Tattoo: SWC 0848H DOB: April 25 2020 REG#: 2243896

SPRING '22	MC CUMBER TITANIUM 3127 MC CUMBER TITANIUM 5197 MISS WIX 062 OF MC CUMBER	SINCLAIR FORTUNATE SON MSS WIX 926 OF MC CUMBER SITZ RAINMAKER 6536 MISS WIX 6145 OF MC CUMBER
BW 23	CHAPMAN MEMENTO 0505X CHAPMAN GOLDIE 5123C CHAPMAN GOLDIE 9044W	SINCLAIR MEMENTO 8RL5 CROWFOOT REV ERICA 5752R CROWFOOT EQUATION 5793R CHAPMAN GOLDIE 234M
WW 34		
YW 64		
M 24		
CE 4.5		
MCE 4.0		

DAM'S PROD

BW	WW	205	WR	YR	AOD	NR
71	660	594	90	98	5	4/96



LOT 67 **CHAPMAN TITANIUM 0803**
Tattoo: SWC 0803H DOB: April 16 2020 REG#: 2243867

SPRING '22	MC CUMBER TITANIUM 3127 MC CUMBER TITANIUM 5197 MISS WIX 062 OF MC CUMBER	SINCLAIR FORTUNATE SON MSS WIX 926 OF MC CUMBER SITZ RAINMAKER 6536 MISS WIX 6145 OF MC CUMBER
BW 22	CROWFOOT JOKER 2029Z CHAPMAN ROSE 5108C CHAPMAN ROSE 318N	CROWFOOT JOKER 6172S CROWFOOT BLACKBIRD 6369S CROWFOOT BRUNO 1670L GLADWALL ROSE OF L 1173
WW 40		
YW 68		
M 23		
CE 4.0		
MCE 5.5		

DAM'S PROD

BW	WW	205	WR	YR	AOD	NR
83	740	649	99	83	5	4/99



LOT 68 **CHAPMAN HOBO 0784**
Tattoo: SWC 0784H DOB: April 06 2020 REG#: Unregis-

SPRING '22	-	-
BW -	ANGUS	-
WW -	-	-
YW -	-	-
M -	ANGUS	-
CE -	-	-
MCE -	-	-

DAM'S PROD

BW	WW	205	WR	YR	AOD	NR
81	685	662	100	100	-	-



LOT 69 **CHAPMAN FORTE 0861**
Tattoo: SWC 0861H DOB: April 27 2020 REG#: 2243903

SPRING '22	PAPA FORTE 1921 COLEMAN FORTE 752 COLEMAN DONNA 714	PAPA OPTIMA 9818 PAPA ENVOIOUS BLACKBIRD 8832 CONNEALY ONWARD COLEMAN DONNA 386
BW 0.5	CHAPMAN MEMENTO 0505X CHAPMAN PRIDE 6038D CHAPMAN PRIDE 8043U	SINCLAIR MEMENTO 8RL5 CROWFOOT REV ERICA 5752R O C C MOONSHINE 740M CHAPMAN PRIDE 226M
WW 35		
YW 63		
M 21		
CE 9.0		
MCE 7.5		

DAM'S PROD

BW	WW	205	WR	YR	AOD	NR
81	735	688	105	109	4	3/98

LOT 70 **CHAPMAN FORTE 0756**
Tattoo: SWC 0756H DOB: April 07 2020 REG#: 2243844

SPRING '22	PAPA FORTE 1921 COLEMAN FORTE 752 COLEMAN DONNA 714	PAPA OPTIMA 9818 PAPA ENVOIOUS BLACKBIRD 8832 CONNEALY ONWARD COLEMAN DONNA 386
BW 10	CHAPMAN MEMENTO 0513X CHAPMAN KELTON 6010D CROWFOOT KELTON 1038Y	SINCLAIR MEMENTO 8RL5 CROWFOOT LOVEMERE PET 5791R XO CROWFOOT JOKER 8814U CROWFOOT KELTON 4790P
WW 39		
YW 68		
M 24		
CE 7.5		
MCE 5.0		

DAM'S PROD

BW	WW	205	WR	YR	AOD	NR
91	695	609	93	107	4	3/93



LOT 71 CHAPMAN FORTE 0884
Tattoo: SWC 0884H DOB: May 02 2020 REG#: 2243911

SPRING '22	PAPA FORTE 1921 COLEMAN FORTE 752 COLEMAN DONNA 714	PAPA OPTIMA 9818 PAPA ENVIOUS BLACKBIRD 8832 CONNEALY ONWARD COLEMAN DONNA 386
BW 0.7	CHAPMAN MEMENTO 0513X CHAPMAN GV LASS 6150D XO CROWFOOT GV LASS 848U	SINCLAIR MEMENTO 8RL5 CROWFOOT LOVEMERE PET 5791R O C C LEGACY 839L CROWFOOT GV LASS 6383S
WW 39		
YW 68		
M 25		
CE 8.0		
MCE 4.5		
	DAM'S PROD	

BW	WW	205	WR	YR	AOD	NR
87	700	670	102	97	4	3/106

LOT 74 CHAPMAN FORTE 0777
Tattoo: SWC 0777H DOB: April 13 2020 REG#: 2243856

SPRING '22	PAPA FORTE 1921 COLEMAN FORTE 752 COLEMAN DONNA 714	PAPA OPTIMA 9818 PAPA ENVIOUS BLACKBIRD 8832 CONNEALY ONWARD COLEMAN DONNA 386
BW 1.0	CHAPMAN MEMENTO 0513X CHAPMAN ZARA BAND 6088D CHAPMAN BAND 720T	COLE CREEK GOLDMERE 581 CROWFOOT KELTON 2015Z CROWFOOT VENTURE 1698L CHAPMAN IDEAL 527R
WW 39		
YW 70		
M 27		
CE 7.0		
MCE 7.0		
	DAM'S PROD	

BW	WW	205	WR	YR	AOD	NR
83	700	624	95	107	4	3/98

LOT 72 CHAPMAN FORTE 0839
Tattoo: SWC 0839H DOB: April 23 2020 REG#: 2243888

SPRING '22	PAPA FORTE 1921 COLEMAN FORTE 752 COLEMAN DONNA 714	PAPA OPTIMA 9818 PAPA ENVIOUS BLACKBIRD 8832 CONNEALY ONWARD COLEMAN DONNA 386
BW 0.7	CHAPMAN MEMENTO 0511X CHAPMAN LURA 6077D CHAPMAN LURA 2010Z	SINCLAIR MEMENTO 8RL5 CROWFOOT REV ROSE 5900R SINCLAIR RITO 9R7 CHAPMAN LURA 782T
WW 46		
YW 82		
M 22		
CE 7.0		
MCE 4.8		
	DAM'S PROD	

BW	WW	205	WR	YR	AOD	NR
93	700	648	99	102	4	3/91

LOT 75 CHAPMAN FORTE 0849
Tattoo: SWC 0849H DOB: April 25 2020 REG#: 2243897

SPRING '22	PAPA FORTE 1921 COLEMAN FORTE 752 COLEMAN DONNA 714	PAPA OPTIMA 9818 PAPA ENVIOUS BLACKBIRD 8832 CONNEALY ONWARD COLEMAN DONNA 386
BW 0.7	CHAPMAN MEMENTO 0505X CHAPMAN G PRIDE 6133D CHAPMAN G PRIDE 8013U	SINCLAIR MEMENTO 8RL5 CROWFOOT REV ERICA 5752R CROWFOOT MACHO 4549P CHAPMAN G PRIDE 672S
WW 35		
YW 60		
M 25		
CE 9.5		
MCE 8.0		
	DAM'S PROD	

BW	WW	205	WR	YR	AOD	NR
81	700	651	99	107	4	3/98

LOT 73 CHAPMAN FORTE 0797
Tattoo: SWC 0797H DOB: April 16 2020 REG#: 2243863

SPRING '22	PAPA FORTE 1921 COLEMAN FORTE 752 COLEMAN DONNA 714	PAPA OPTIMA 9818 PAPA ENVIOUS BLACKBIRD 8832 CONNEALY ONWARD COLEMAN DONNA 386
BW 0.6	CHAPMAN MEMENTO 0513X CHAPMAN LADY ERICA 6161D CHAPMAN LADY ERICA 905W	SINCLAIR MEMENTO 8RL5 CROWFOOT LOVEMERE PET 5791R CHAPMAN LEGACY 026S CHAPMAN EXTACY 765T
WW 37		
YW 64		
M 21		
CE 9.0		
MCE 8.0		
	DAM'S PROD	

BW	WW	205	WR	YR	AOD	NR
81	690	622	95	100	4	3/95

LOT 76 CHAPMAN FORTE 0898
Tattoo: SWC 0898H DOB: May 07 2020 REG#: 2243912

SPRING '22	PAPA FORTE 1921 COLEMAN FORTE 752 COLEMAN DONNA 714	PAPA OPTIMA 9818 PAPA ENVIOUS BLACKBIRD 8832 CONNEALY ONWARD COLEMAN DONNA 386
BW 0.1	CHAPMAN MEMENTO 0505X CHAPMAN PRIDE 6095D CHAPMAN PRIDE 775T	SINCLAIR MEMENTO 8RL5 CROWFOOT REV ERICA 5752R CHAPMAN ALLIANCE 259M KLUZAK PRIDE 256
WW 35		
YW 58		
M 25		
CE 9.5		
MCE 8.0		
	DAM'S PROD	

BW	WW	205	WR	YR	AOD	NR
85	705	687	105	97	4	3/108



LOT 77 **CHAPMAN STEADFAST 0763**
 Tattoo: SWC 0763H DOB: April 10 2020 REG#: Pending

SPRING '22 BW 19 WW 49 YW 87 M 22 CE 5.8 MCE 8.5	MC CUMBER STEADFAST 635 MC CUMBER STEADFAST 809 LASSIE 706 OF MC CUMBER RUDOW'S ADMINISTRATOR 333 CHAPMAN MERLE 7026E CHAPMAN MERLE 4026B	MC CUMBER TITANIUM 3127 MISS WIX 2003 OF MC CUMBER S A V 8180 TRAVELER 004 LASSIE 0006 OF MC CUMBER RUDOW'S WHOLESOME 953 RUDOW'S MISS ERICA 962 COLE CREEK CEDAR RIDGE 181 XO CROWFOOT MERLE 1442Y
---	--	--

DAM'S PROD

BW	WW	205	WR	YR	AOD	NR
78	720	655	100	112	3	2/96

LOT 79 **CHAPMAN STEADFAST 0768**
 Tattoo: SWC 0768H DOB: April 11 2020 REG#: Pending

SPRING '22 BW 1.8 WW 48 YW 87 M 28 CE 6.0 MCE 6.0	MC CUMBER STEADFAST 635 MC CUMBER STEADFAST 809 LASSIE 706 OF MC CUMBER CHAPMAN MEMENTO 3589A CHAPMAN K PRIDE 7117E CHAPMAN K PRIDE 2039Z	MC CUMBER TITANIUM 3127 MISS WIX 2003 OF MC CUMBER S A V 8180 TRAVELER 004 LASSIE 0006 OF MC CUMBER CHAPMAN MEMENTO 0505X CHAPMAN KAWICH LADY 8065U CROWFOOT EQUATION 5793R CHAPMAN PRIDE 4409
--	--	---

DAM'S PROD

BW	WW	205	WR	YR	AOD	NR
95	720	660	100	106	3	2/99

LOT 78 **CHAPMAN STEADFAST 0791**
 Tattoo: SWC 0791H DOB: April 14 2020 REG#: Pending

SPRING '22 BW 17 WW 49 YW 86 M 22 CE 3.5 MCE 5.8	MC CUMBER STEADFAST 635 MC CUMBER STEADFAST 809 LASSIE 706 OF MC CUMBER CHAPMAN KING TEN 4522B CHAPMAN KIWI 7152E CHAPMAN KIWI 634S	MC CUMBER TITANIUM 3127 MISS WIX 2003 OF MC CUMBER S A V 8180 TRAVELER 004 LASSIE 0006 OF MC CUMBER CROWFOOT 9052W C H BLACKBIRD 9717 PINEBANK WAIGROUP 41/97 BARB WALL P ROSE LEE 5140
---	--	--

DAM'S PROD

BW	WW	205	WR	YR	AOD	NR
85	685	636	97	89	3	2/95

LOT 80 **CHAPMAN STEADFAST 0865**
 Tattoo: SWC 0865H DOB: April 28 2020 REG#: Pending

SPRING '22 BW 1.4 WW 43 YW 79 M 21 CE 5.3 MCE 4.8	MC CUMBER STEADFAST 635 MC CUMBER STEADFAST 809 LASSIE 706 OF MC CUMBER CHAPMAN MEMENTO 0511X CHAPMAN LADY ERICA 7191E CHAPMAN LADY ERICA 108Y	MC CUMBER TITANIUM 3127 MISS WIX 2003 OF MC CUMBER S A V 8180 TRAVELER 004 LASSIE 0006 OF MC CUMBER SINCLAIR MEMENTO 8RL5 CROWFOOT REV ROSE 5900R SINCLAIR RITO LEGACY 3R9 PAT LADY ERICA 8984
--	---	---

DAM'S PROD

BW	WW	205	WR	YR	AOD	NR
96	710	691	105	108	3	2/108



LOT 82



LOT 84



LOT 83

LOT 81 **CHAPMAN STEADFAST 0766**
 Tattoo: SWC 0766H DOB: April 11 2020 REG#: Pending

SPRING '22 BW 1.7 WW 47 YW 83 M 21 CE 5.0 MCE 6.0	MC CUMBER STEADFAST 635 MC CUMBER STEADFAST 809 LASSIE 706 OF MC CUMBER MC CUMBER 8R101 RITO 161 CHAPMAN ZARA 7082E CHAPMAN ZARA 022X	MC CUMBER TITANIUM 3127 MISS WIX 2003 OF MC CUMBER S A V 8180 TRAVELER 004 LASSIE 0006 OF MC CUMBER SINCLAIR ENTREPRENEUR 8R101 B PRIDE 463 OF MC CUMBER CROWFOOT EQUATION 5793R CHAPMAN ZARA 731T
---	--	---

DAM'S PROD

BW	WW	205	WR	YR	AOD	NR
88	690	634	96	95	3	2/98

LOT 82 **CHAPMAN KING TEN 0751**
 Tattoo: SWC 0751H DOB: April 03 2020 REG#: 2243841

SPRING '22 BW 2.8 WW 54 YW 99 M 20 CE 0.5 MCE 2.0	CROWFOOT 9052W CHAPMAN KING TEN 4522B C H BLACKBIRD 9717 S A V SENSATION 5615 CHAPMAN ROSEWALL 8345F CHAPMAN ROSEWALL 9015W	CROWFOOT EQUATION 5793R CROWFOOT KELTON 4790P J R SHARPSHOOTER C H BLACKBIRD 6604 S A V REGISTRY 2831 S A V BLACKCAP MAY 4136 CAF CROWFOOT 2711M CROWFOOT ROSEWALL 5770R
---	--	---

DAM'S PROD

BW	WW	205	WR	YR	AOD	NR
81	730	685	104	-	2	1/104

LOT 83 **CHAPMAN KING TEN 0752**
 Tattoo: SWC 0752H DOB: April 05 2020 REG#: 2243842

SPRING '22 BW 2.7 WW 59 YW 93 M 20 CE 1.0 MCE 2.5	CROWFOOT 9052W CHAPMAN KING TEN 4522B C H BLACKBIRD 9717 CHAPMAN MEMENTO 0505X CHAPMAN NEONIA 8312F CHAPMAN NEONIA 2009Z	CROWFOOT EQUATION 5793R CROWFOOT KELTON 4790P J R SHARPSHOOTER C H BLACKBIRD 6604 SINCLAIR MEMENTO 8RL5 CROWFOOT REV ERICA 5752R SINCLAIR RITO 9R7 CHAPMAN NEONIA 774T
---	---	---

DAM'S PROD

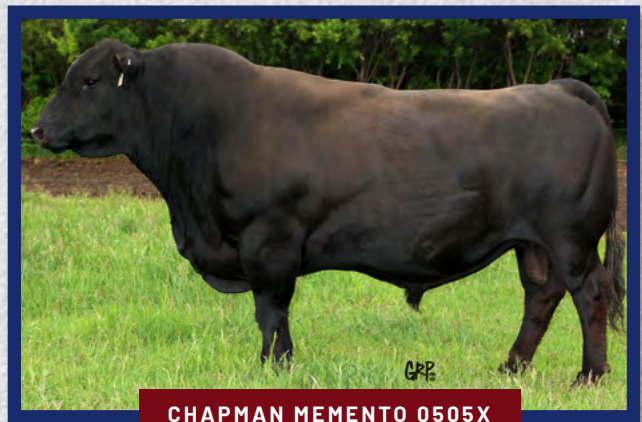
BW	WW	205	WR	YR	AOD	NR
72	825	766	117	-	2	1/117

LOT 84 **CHAPMAN BLUE RIDGE 0755**
 Tattoo: SWC 0755H DOB: April 06 2020 REG#: 2243843

SPRING '22 BW 0.4 WW 25 YW 53 M 32 CE 7.3 MCE 6.8	W R A CEDAR RUN A7 WRA CEDAR RUN D2 W R A SARAH 237W XO CROWFOOT EQU 268Z CHAPMAN GOLDIE 7055E CHAPMAN GOLDIE 4084B	COLE CREEK CEDAR RIDGE 1V W R A EILEEN BAR 115P W R A ARISTOCRAT R4 W R A SARAH 237G CROWFOOT EQUATION 5793R XO CROWFOOT DIXIE ERICA 828U CHAPMAN MEMENTO 0505X CHAPMAN GOLDIE 9044W
---	--	---

DAM'S PROD

BW	WW	205	WR	YR	AOD	NR
85	805	719	109	114	3	2/105



CHAPMAN MEMENTO 0505X



LOT 85 **CHAPMAN BLUE RIDGE 0828**
 Tattoo: SWC 0828H DOB: April 21 2020 REG#: 2243882

SPRING '22	W R A CEDAR RUN A7 WRA CEDAR RUN DZ W R A SARAH 237W	COLE CREEK CEDAR RIDGE 1V W R A EILEEN BAR 115P W R A ARISTOCRAT R4 W R A SARAH 237G
BW 0.3	XO CROWFOOT EQU 268Z CHAPMAN LANA 7148E CHAPMAN LANA 4034B	CROWFOOT EQUATION 5793R XO CROWFOOT DIXIE ERICA 828U SINCLAIR RITO 9R7 CHAPMAN LANA 1042Y
WW 32		
YW 62		
M 28		
CE 7.3		
MCE 6.8		

DAM'S PROD

BW	WW	205	WR	YR	AOD	NR
87	745	704	107	111	3	2/108



LOT 86 **CHAPMAN KING TEN 0761**
 Tattoo: SWC 0761H DOB: April 10 2020 REG#: 2243848

BW 2.0	CROWFOOT 9052W CHAPMAN KING TEN 4522B C H BLACKBIRD 9717	CROWFOOT EQUATION 5793R CROWFOOT KELTON 4790P J R SHARPSHOOTER C H BLACKBIRD 6604
WW 49	CHAPMAN MEMENTO 0505X CHAPMAN PRISCILLA 8366F CHAPMAN PRISCILLA 2026Z	SINCLAIR MEMENTO 8RL5 CROWFOOT REV ERICA 5752R COLEMAN MISSING LINK 9267 RED CHAPMAN PRISCILLA 0118X
YW 82		
M 21		
CE 3.0		
MCE 3.0		

DAM'S PROD

BW	WW	205	WR	YR	AOD	NR
77	655	637	97	96	2	1/97



LOT 87 **CHAPMAN KING TEN 0762**
 Tattoo: SWC 0762H DOB: April 10 2020 REG#: 2243849

SPRING '22	CROWFOOT 9052W CHAPMAN KING TEN 4522B C H BLACKBIRD 9717	CROWFOOT EQUATION 5793R CROWFOOT KELTON 4790P J R SHARPSHOOTER C H BLACKBIRD 6604
BW 2.0	S A V SENSATION 5615 CHAPMAN ANNIE 8349F CHAPMAN ANNIE 902W	S A V REGISTRY 2831 S A V BLACKCAP MAY 4136 CAF S B R WATERTON 6148S CHAPMAN ANNIE 714T
WW 55		
YW 93		
M 22		
CE 0.5		
MCE 3.0		

DAM'S PROD

BW	WW	205	WR	YR	AOD	NR
79	695	671	102	103	2	1/102

LOT 88 **CHAPMAN COALITION 0875**
 Tattoo: SWC 0875H DOB: April 30 2020 REG#: 2243909

SPRING '22	SITZ ALLIANCE 6595 CHAPMAN COALITION 4557B CROWFOOT LADY ERICA 3785N	SITZ TRAVELER 8180 SITZ BARBARAMERE JET 2698 O C C JOKER 620J PAT LADY ERICA 8984
BW 1.4	CROWFOOT MACHO 4549P CHAPMAN FAHRENESS 916W CHAPMAN FAHRENESS 678S	O C C MAGNUM 749M CROWFOOT BLACKBIRD 2537M D D A FAHREN 21X BARBWALL G PRIDE 632
WW 33		
YW 56		
M 25		
CE 7.0		
MCE 8.5		

DAM'S PROD

BW	WW	205	WR	YR	AOD	NR
84	715	689	105	101	11	10/103



LOT 89



LOT 94

LOT 89 **CHAPMAN COALITION 0776**
 Tattoo: SWC 0776H DOB: April 13 2020 REG#: 2243855

SPRING '22	SITZ ALLIANCE 6595 CHAPMAN COALITION 4557B CROWFOOT LADY ERICA 3785N	SITZ TRAVELER 8180 SITZ BARBARAMERE JET 2698 O C C JOKER 620J PAT LADY ERICA 8984				
BW 22	CROWFOOT MACHO 4549P CHAPMAN NELLIE 9019W CHAPMAN NELLIE 744T	O C C MAGNUM 749M CROWFOOT BLACKBIRD 2537M CHAPMAN PAY DAY 4456 CHAPMAN NELLIE 524R				
WW 34						
YW 58						
M 25						
CE 5.5						
MCE 8.5						
DAM'S PROD						
BW	WW	205	WR	YR	AOD	NR
84	825	742	113	108	11	10/110

LOT 92 **CHAPMAN EQUATE 0769**
 Tattoo: SWC 0769H DOB: April 11 2020 REG#: 2243851

SPRING '22	CROWFOOT EQUATION 5793R CHAPMAN EQUATION 4547B CROWFOOT REV ROSE 5900R	O C C LEGACY 839L CROWFOOT FORKS 755K O C C MOONSHINE 740M CROWFOOT CH REV ROSE 1627L				
BW 0.9	CHAPMAN COALITION 4557B CHAPMAN PEARL 8320F XO CROWFOOT PEARL 1535Y	SITZ ALLIANCE 6595 CROWFOOT LADY ERICA 3785N XO CROWFOOT JOKER 8814U CROWFOOT 4833P				
WW 45						
YW 75						
M 27						
CE 6.0						
MCE 4.0						
DAM'S PROD						
BW	WW	205	WR	YR	AOD	NR
81	680	661	101	91	2	1/101

LOT 90 **CHAPMAN EQUATE 0819**
 Tattoo: SWC 0819H DOB: April 19 2020 REG#: 2243877

SPRING '22	CROWFOOT EQUATION 5793R CHAPMAN EQUATION 4547B CROWFOOT REV ROSE 5900R	O C C LEGACY 839L CROWFOOT FORKS 755K O C C MOONSHINE 740M CROWFOOT CH REV ROSE 1627L				
BW 16	WRA CEDAR RUN D2 CHAPMAN JEANNE 8277F CHAPMAN JEANNE 0119X	W R A CEDAR RUN A7 W R A SARAH 237W CROWFOOT JOKER 6172S CHAPMAN JEANNE 778T				
WW 42						
YW 74						
M 31						
CE 4.0						
MCE 3.0						
DAM'S PROD						
BW	WW	205	WR	YR	AOD	NR
85	755	744	113	106	2	1/113

LOT 93 **CHAPMAN MEMENTO 0855**
 Tattoo: SWC 0855H DOB: April 25 2020 REG#: 2243901

SPRING '22	CHAPMAN MEMENTO 0505X CHAPMAN MEMENTO 7542E CHAPMAN ROSE 802U	SINCLAIR MEMENTO 8RL5 CROWFOOT REV ERICA 5752R S B R WATERTON 6148S CHAPMAN ROSE 631S				
BW 0.4	CROWFOOT MACHO 4549P CHAPMAN CHLOE 8017U CHAPMAN CHLOE 617S	O C C MAGNUM 749M CROWFOOT BLACKBIRD 2537M CROWFOOT VENTURE 1698L CHAPMAN CHLOE 428P				
WW 30						
YW 50						
M 23						
CE 8.0						
MCE 9.0						
DAM'S PROD						
BW	WW	205	WR	YR	AOD	NR
86	675	641	98	112	12	11/103

LOT 91 **CHAPMAN EQUATE 0843**
 Tattoo: SWC 0843H DOB: April 23 2020 REG#: 2243892

SPRING '22	CROWFOOT EQUATION 5793R CHAPMAN EQUATION 4547B CROWFOOT REV ROSE 5900R	O C C LEGACY 839L CROWFOOT FORKS 755K O C C MOONSHINE 740M CROWFOOT CH REV ROSE 1627L				
BW 25	MC CUMBER TITANIUM 5197 CHAPMAN ERICA 8332F CHAPMAN BLOSSOM 827U	MC CUMBER TITANIUM 3127 MISS WIX 062 OF MC CUMBER SINCLAIR RITO LEGACY 3R9 BAR J P BLOSSOM 5M				
WW 48						
YW 84						
M 29						
CE 2.5						
MCE 1.5						
DAM'S PROD						
BW	WW	205	WR	YR	AOD	NR
86	650	661	101	99	2	1/101

LOT 94 **CHAPMAN MEMENTO 0759**
 Tattoo: SWC 0759H DOB: April 07 2020 REG#: 2243847

SPRING '22	CHAPMAN MEMENTO 0505X CHAPMAN MEMENTO 7542E CHAPMAN ROSE 802U	SINCLAIR MEMENTO 8RL5 CROWFOOT REV ERICA 5752R S B R WATERTON 6148S CHAPMAN ROSE 631S				
BW 0.3	PINEBANK WAIGROUP 41/97 CHAPMAN KIWI 634S BARB WALL P ROSE LEE 5140	PINEBANK WAIG 31/95 PINEBANK 639/88 SHOSHONE LANCE 2315 BAR PATRIOT ROSE LEE B 2120				
WW 30						
YW 47						
M 24						
CE 5.5						
MCE 7.5						
DAM'S PROD						
BW	WW	205	WR	YR	AOD	NR
88	650	582	89	95	14	13/105



LOT 95 **CHAPMAN DUECE 0879**
 Tattoo: SWC 0879H DOB: April 30 2020 REG#: Percentage

SPRING '22	RF CAPTAIN BLACK 430B	SVS CAPTAIN MORGAN 11Z
BW -	CIRCLE G DIESEL 34D	TLG FLIRTIN WITH YOU
WW -	D BAR C BLK CORDELIA 982W	DOUBLE BAR D DRIFTWOOD 83
YW -		CCC BLK CORDELIA 024K
M -	CHAPMAN MEMENTO 0513X	SINCLAIR MEMENTO 8RL5
CE -	CHAPMAN EILEEN 5129C	CROWFOOT LOVEMERE PET 5791R
MCE -	CHAPMAN EILEEN 216M	CROWFOOT AMBUSH 9137J
		GLADWALL G V EILEEN 6230

DAM'S PROD

BW	WW	205	WR	YR	AOD	NR
80	735	679	103	104	5	4/119

LOT 98 **CHAPMAN STEADFAST 0771**
 Tattoo: SWC 0771H DOB: APRIL 12 2020 REG#: Pending

SPRING '22	MC CUMBER STEADFAST 635	MC CUMBER TITANIUM 3127
BW 1.5	MC CUMBER STEADFAST 809	MISS WIX 2003 OF MC CUMBER
WW 44	LASSIE 706 OF MC CUMBER	S A V 8180 TRAVELER 004
YW 82		LASSIE 0006 OF MC CUMBER
M 25	CHAPMAN MEMENTO 3589A	CHAPMAN MEMENTO 0505X
CE 6.0	CHAPMAN PRIDE 7176E	CHAPMAN KAWICH LADY 8065U
MCE 6.0	CHAPMAN PRIDE 2038Z	HF UNDISPUTED 183U
		CHAPMAN PRIDE 226M

DAM'S PROD

BW	WW	205	WR	YR	AOD	NR
84	685	631	96	-	3	2/91

LOT 96 **CHAPMAN ROBUST 0937**
 Tattoo: SWC 0937H DOB: May 21 2020 REG#: 2243924

SPRING '22	BC SURVEYOR 680D	BC EAGLE EYE 110-7
BW 19	BC ROBUST 0807	BC 2266 PRIDES LASS 4132 680
WW 57	BC 327-8 CP BELLE 0-807	BC PURE PRIDE 327-8
YW 89		BC 607 CP BELLE MF 807
M 16	SINCLAIR RITO 9R7	RITO REVOLVE 0R5
CE 4.0	CHAPMAN PRINCESS 3004A	SINCLAIR K BTY 6PV5 25F3
MCE -1.5	CHAPMAN PRINCESS 9026W	CROWFOOT JOKER 6172S
		CHAPMAN PRINCESS 619S

DAM'S PROD

BW	WW	205	WR	YR	AOD	NR
89	610	610	94	-	7	6/102

LOT 99 **CHAPMAN FORTE 0859**
 Tattoo: SWC 0859H DOB: April 27 2020 REG#: 2243902

SPRING '22	PAPA FORTE 1921	PAPA OPTIMA 9818
BW 1.3	COLEMAN FORTE 752	PAPA ENVIUS BLACKBIRD 8832
WW 38	COLEMAN FORTE 752	CO*NE*WY ONWARD
YW 67		TO EM *DONNA 386
M 24	CHAPMAN MEMENTO 0513X	CHAPMAN MEMENTO 8RL5
CE 7.5	CHAPMAN BLACKBIRD 6099D	CROWFOOT LOVEMERE PET 5791R
MCE 6.5	CHAPMAN BLACKBIRD 943W	CHAPMAN LEGACY 026S
		CHAPMAN BLACKBIRD 719T

DAM'S PROD

BW	WW	205	WR	YR	AOD	NR
85	695	651	99	-	4	3/95

LOT 97 **CHAPMAN ROBUST 0918**
 Tattoo: SWC 0918H DOB: May 16 2020 REG#: 2243917

SPRING '22	BC SURVEYOR 680D	BC EAGLE EYE 110-7
BW 0.9	BC ROBUST 0807	BC 2266 PRIDES LASS 4132 680
WW 44	BC 327-8 CP BELLE 0-807	BC PURE PRIDE 327-8
YW 68		BC 607 CP BELLE MF 807
M 18	CHAPMAN RITO LEGACY 218U	SINCLAIR RITO LEGACY 3R9
CE 6.5	CHAPMAN ELEVATE 2081Z	PAT LADY ERICA 8984
MCE 0.0	CHAPMAN ELEVATE 325N	CROWFOOT BRUNO 1670L
		GLADWALL ELEVATE 1101

DAM'S PROD

BW	WW	205	WR	YR	AOD	NR
83	635	627	95	-	8	7/99

LOT 100 **CHAPMAN MEMENTO 0931**
 Tattoo: SWC 0931H DOB: May 19 2020 REG#: 2243921

SPRING '22	CHAPMAN MEMENTO 0505X	SINCLAIR MEMENTO 8RL5
BW 0.8	CHAPMAN MEMENTO 7542E	CROWFOOT REV ERICA 5752R
WW 33	CHAPMAN ROSE 802U	S B R WATERTON 6148S
YW 54		CHAPMAN ROSE 631S
M 24	SINCLAIR RITO LEGACY 3R9	R R RITO 707
CE 7.0	CHAPMAN ROSE 832U	IDEAL 4465 OF 6807 4286
MCE 7.0	CHAPMAN ROSE 212M	C H ALLIANCE 9339
		GLADWALL ROSE OF L 6310

DAM'S PROD

BW	WW	205	WR	YR	AOD	NR
77	615	642	98	126	12	11/99

FOOT SCORE GUIDELINES

Foot Angle (5 is ideal)



1

Extremely straight pasterns.
Very short toe. Unsound.



2

Straight front and rear pasterns.
Marginally unsound.



3

Moderately straight front
and rear pasterns.



4

Slightly straight front
and rear pasterns.



5

Ideal. Approximately 45-degree angle
at pastern joint. Appropriate length of
toe and depth of heel.



6

Slightly shallow heel and long toe.



7

Moderately shallow heel and long toe.
Somewhat weak pasterns.



8

Shallow heel and long toe.
Marginally unsound.



9

Extremely shallow heel and long toe.
Extremely weak pasterns. Unsound.

Claw Set (5 is ideal)

Extremely weak, open,
divergent claw set. Unsound.

1



Open, divergent claw set.
Marginally unsound.

2



Moderately open/divergent
claw set.

3



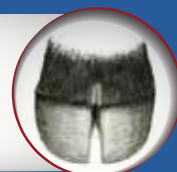
Slightly open/divergent
claw set.

4



Ideal. Symmetrical claws, with
appropriate space between claws.

5



Slight tendency for claws to curl.
One claw may be slightly larger
than the other.

6



Tendency for claws to curl, with one
claw larger than the other.

7



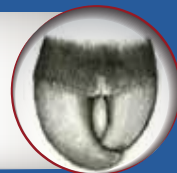
Moderate scissor claw and/or screw
claw. Curling of one or both claws. Near
crossing of claws. Marginally unsound.

8



Extreme scissor claw and/or screw claw.
Pronounced curling of one or both claws.
Crossing of claws. Unsound

9



Resident & A.I.
HERDSIRES



SITZ PAYWEIGHT 749E

{BASIN PAYWEIGHT 1682 X CONNEALY THUNDER}



SITZ DRY VALLEY 712H

{CONNEALY DRY VALLEY X SITZ UPWARD 307R}



McCUMBER 307 FORTUNATE 7141

{McCUMBER FORTUNATE 307 X OCC TREMENDOUS 619T}



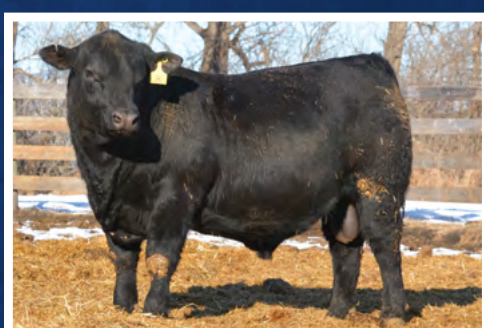
McCUMBER TITANIUM 5197

{McCUMBER TITANIUM 3127 X SITZ RAINMAKER 6536}



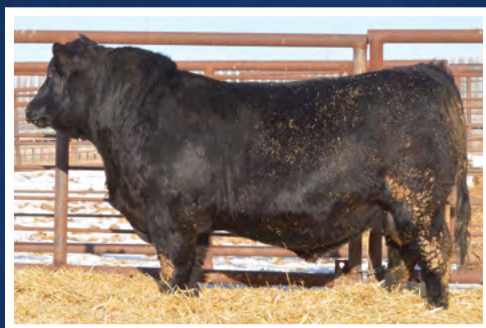
McCUMBER STEADFAST 809

{McCUMBER STEADFAST 635 X SAV 8180 TRAVELER 004}



CHAPMAN ROBUST 8568

{BC ROBUST 0807 X McCUMBER 8R101 RITO 161}



CHAPMAN RECOURSE 8613

{SAV RESOURCE 1441 X CROWFOOT EQUATION 5793R}



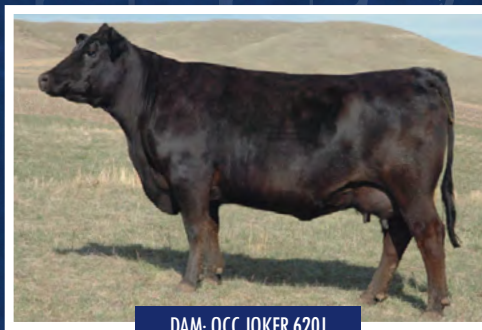
CHAPMAN PAY DIRT 9820

{SITZ PAYWEIGHT 749E X SINCLAIR RITO 9R7}



CHAPMAN MEMENTO 7542E

{CHAPMAN MEMENTO 0505X X SBR WATERTON 6148S}



DAM: OCC JOKER 620J

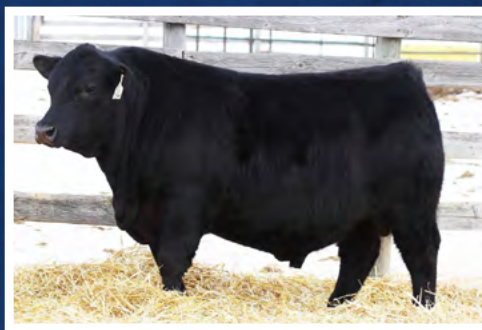
CHAPMAN COALITION 4557B

{SITZ ALLIANCE 6595 X OCC JOKER 620J}



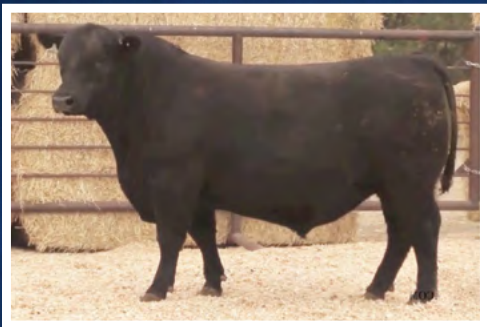
BAR-E-L POWER 32G

{OCC ECHELON 857E X HF G-MAN 29B}



BAR-E-L HOMELAND 13H

{HF ALCATRAZ 60F X SAV INTERNATIONAL 2020}



REDLAND DO IT ALL 570

{OCC DO IT ALL 656D X GDAR GAME DAY 449}



CRESCENT CREEK IMPRESSIVE 8H

{HA OUTSIDE 5161 X MINBURN MAIN EVENT 82R}



RF INCITER 037H

{BROOKING FIREBRAND 6068 X SVS CAPTAIN MORGAN 11Z}



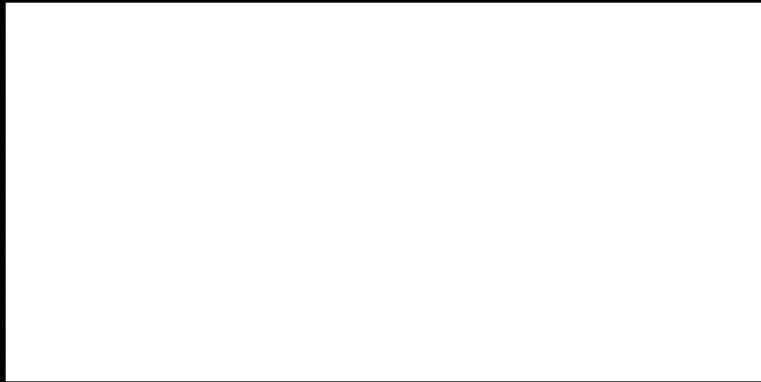
BC ROBUST 0807

{BC SURVEYOR 680D X BC PURE PRIDE 327-8}

2021



BOX 728
STETTLER, ALBERTA
T0C 2L0



WWW.CHAPMANCATTLE.COM

PRINTED IN CANADA / FOR FREE DISTRIBUTION

In order to save trees, please email us if you do not wish to receive a catalog or are no longer in the cattle business. Thank you.